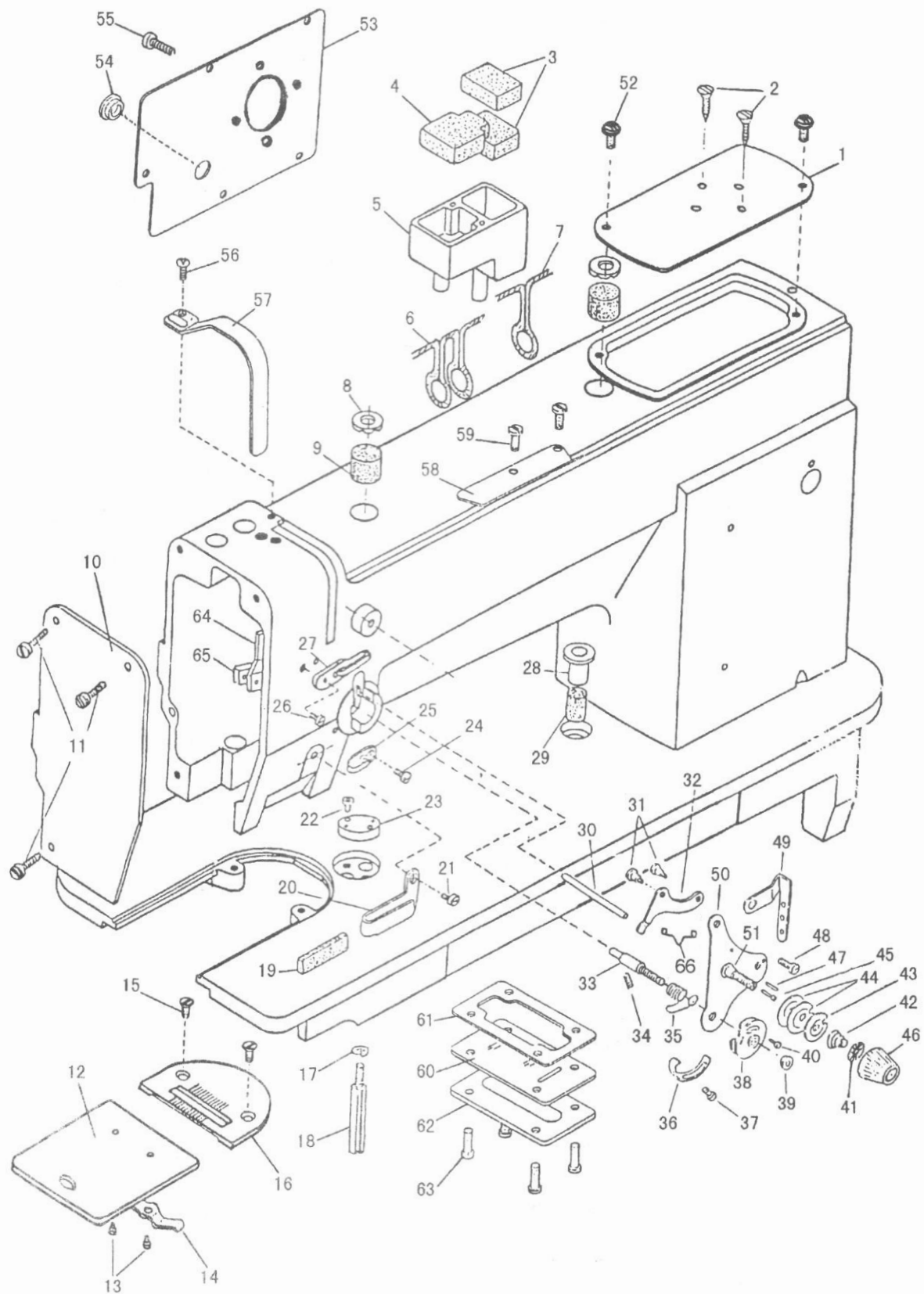


WYKAZ CZĘŚCI
DO MASZINY HIGHLEAD
MODEL
GC 0618-1
GC 0618-1SC
GC 0618-1-D2

A.ARM BED AND ITS ACCESSORIES



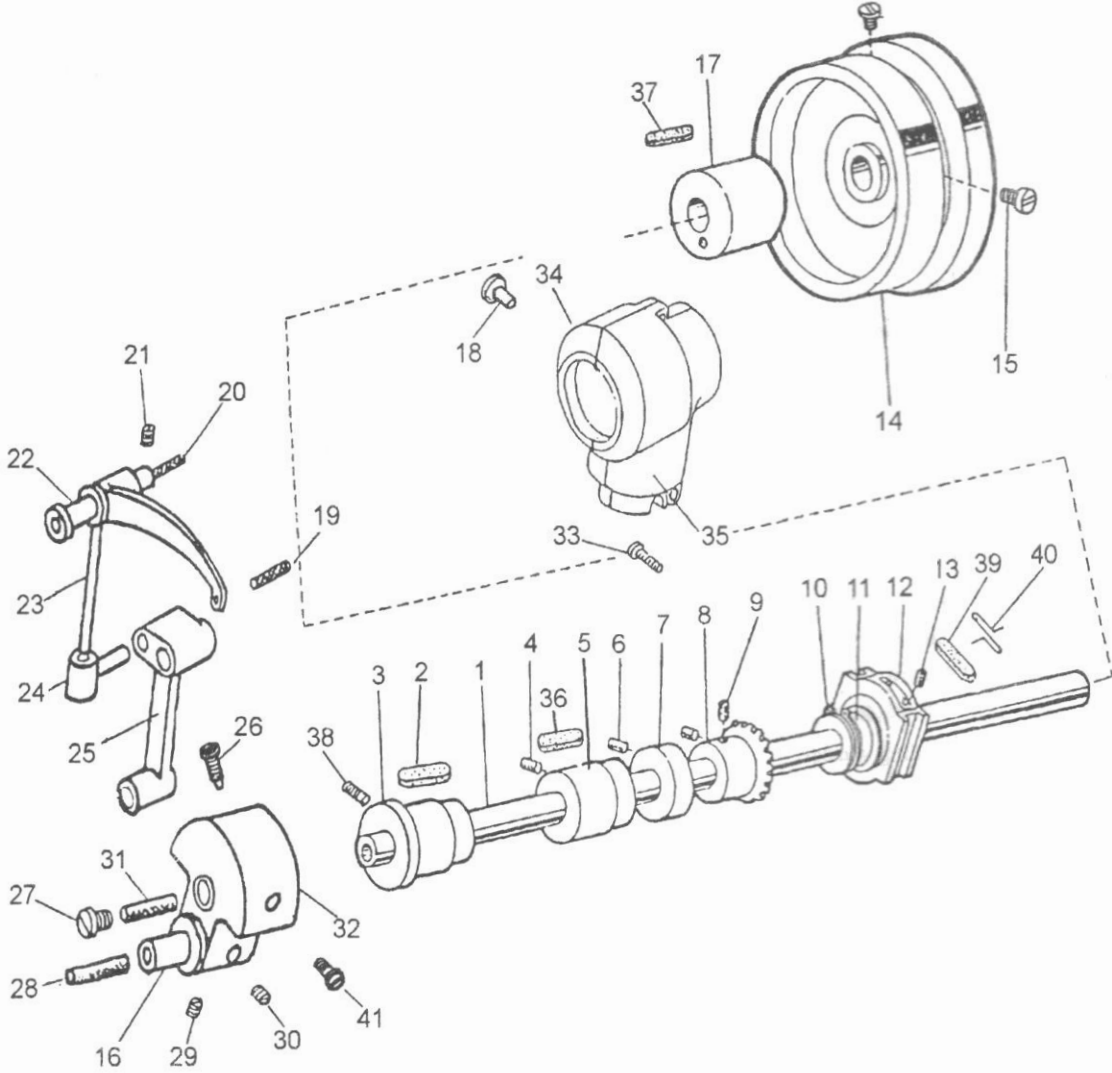
A.ARM BED AND ITS ACCESSORIES

Fig. No.	Part No.	Description	GC0618-1	GC0618-1-SC	GC0618-1-D2	Remarks
A01	H3115B0721	Arm cover(right)	1	1	1	
A02	HA06030080	Screw	2	2	2	
A03	H2020M0069	Felt	1	1	1	
A04	H2020M0067	Felt	2	2	2	
A05	H2020M0066	Arm oil box(right)	1	1	1	
A06	H2020M0068	Oil wick	1	1	1	
A07	H2020M0068	Oil wick	1	1	1	
A08	H2400J2010	Oil cap	1	1	1	
A09	H2400J2020	Oiling felt	1	1	1	
A10	H3106B0671	Face plate	1	1	1	
A11	HA300B2170	Screw	2	2	2	SM11/64(40)×9
A12	HA124B0711	Slide plate	1	1	1	
A13	HA124B0713	Screw	2	2	2	SM3/32(56)×2.2
A14	HA124B0712	Slide plate spring	1	1	1	
A15	H2000B2050	Screw	2	2	2	SM11/64(40)×6.5
A16	H3100B2090	Needle plate	1	1	1	
A16	H4500B2020	Needle plate				
A17	H005008060	Spring washer	1	1	1	
A18	H2009B0653	Leg	1	1	1	
A19	H3108B0692	Felt	1	1	1	
A20	H3108B0691	Thread guide	1	1	1	
A21	HA500C2070	Screw	1	1	1	SM9/64(40)×5
A22	HA300B2130	Screw	2	2	2	SM11/64(40)×5.5
A23	H2000B2040	Cloth guide plate	1	1	1	
A24	HA106B0676	Screw	1	1	1	SM9/64(40)×6
A25	HA106B0675	Thread guide	1	1	1	
A26	H2400B2080	Screw	1	1	1	SM3/16(28)×13
A27	H2400B2070	Thread guide	1	1	1	
A28	H2000M0090	Oil cap	1	1	1	
A29	H2000M0080	Felt	2	2	2	
A30	H3100G2230	Thread tension releasing pin	1	1		
A30	H4200G2010	Thread tension releasing pin(long)			1	
A30	H4200G2020	Thread tension releasing pin(short)			1	
A31	H2504C6510	Screw	2	2	2	
A32	H3111B0704	Tension releasing lever	1	1	1	
A33	H31611B311	Screw	1	1	1	
A34	HA300B2080	Screw	1	1	1	SM15/64(28)×6.8
A35	H3111B0702	Thread controller spring	1	1	1	
A36	H3221B6819	Thread controller spring stop	1	1	1	
A37	H32481BC21	Screw	1	1	1	
A38	H2504C0654	Thread guide	1	1	1	
A39	H2504C0658	Nut	1	1	1	
A40	H3111B0703	Ser screw	1	1	1	SM3/32(56)×6

A.ARM BED AND ITS ACCESSORIES

Fig. No.	Part No.	Description	GC0618-1	GC0618-1-SC	GC0618-1-D2	Remarks
A41	HA115B7010	Stop disc	1	1	1	
A42	HA607B0068	Tension releasing spring	1	1	1	
A43	H2504C0657	Thread tension releasing plate	1	1	1	
A44	H2504C0656	Thread tension disc	2	2	2	
A45	H2504C0121	Thread tension releasing pin	1	1	1	
A46	HA310B0701	Nut	1	1	1	
A47	H31611B211	Pin	1	1	1	
A48	HA7311C606	Screw	1	1	1	
A49	H3100B2070	Thread guide	1	1	1	
A50	H31611B111	Tension bracket	1	1	1	
A51	H2504C0013	Thread tension stud	1	1	1	
A52	HA300B2170	Screw	2	2	2	SM11/64(40)×9
A53	H4205I0661	Arm side plate			1	
A53	H3107B0681	Arm side plate	1	1		
A54	H2000B2010	Rubber plug			1	
A54	HA307E0674	Rubber plug	1	1		
A55	HA300B2170	Screw	5	5	5	
A56	HA300B2160	Screw	1	1	1	SM11/64(40)×10
A57	H3100B2060	Thread take-up lever cover	1	1	1	
A58	H2400B2100	Thread guide	1	1		
A58	H4206B0066	Thread tension complete			1	
A59	HA700B2060	Screw	2	2		
A60	H2000M0180	Oil window	1	1	1	
A61	H2000M0190	Sealing washer	1	1	1	
A62	H2000M0200	Gland	1	1	1	
A63	HA300B2170	Screw	5	5	5	SM11/64(40)×9
A64	H2400B2050	Oil guard	1	1	1	
A65	H2400B2060	Plate for oil guard	1	1	1	
A66	H3111B0705	Plate spring	1	1	1	

B.ARM SHAFT MECHANISM



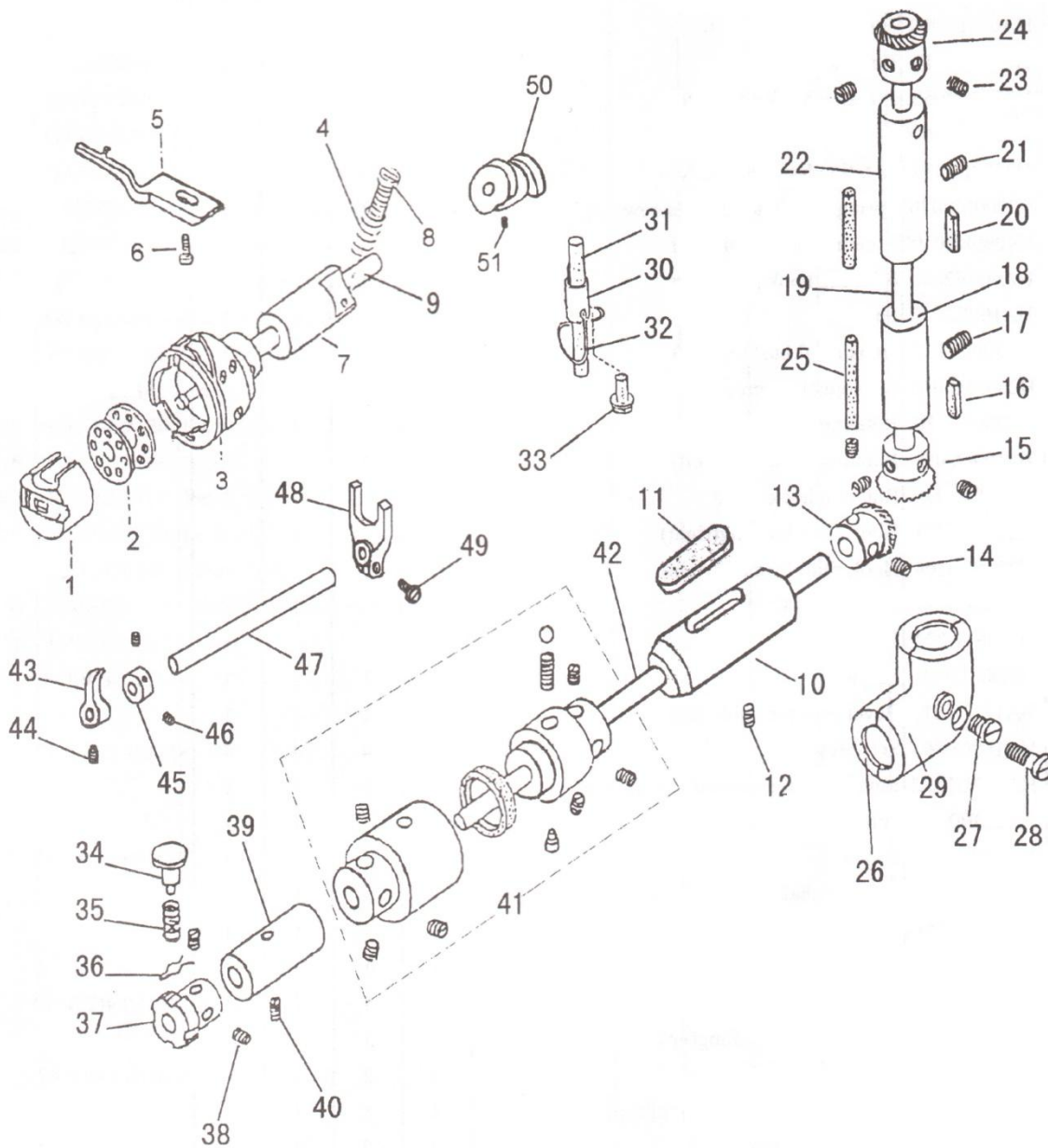
B.ARM SHAFT MECHANISM

Fig. No.	Part No.	Description	GC0618-1	GC0618-1-SC	GC0618-1-D2		Remarks
B01	H3100C2110	Arm shaft	1	1	1		
B02	H2009B0743	Felt	1	1	1		
B03	H31133B104	Arm shaft bushing(left)	1	1	1		
B04	HA100C2020	Screw	1	1	1		SM15/64(28)×10
B05	H31122B204	Arm shaft bushing(middle)	1	1	1		
B06	HA105D0662	Screw	2	2	2		SM1/4 (40) ×4
B07	HA105D0661	Arm shaft collar	1	1	1		
B08	HA113D2112	bevel gear for arm shaft	1	1	1		
B09	HA108D0663	Set screw	8	8	8		SM1/4(40)×7
B10	HA112D3012	C-type ring	1	1	1		
B11	H3100E2010	Feed and feed lifting eccentric	1	1	1		
B12	HA3411D208	Slide block	1	1	1		
B13	HA3411D308	Screw	2	2	2		
B14	H2000C2040	Balance wheel	1	1			
B15	HA110D0672	Screw	2	2			SM15/64(28)×12
B16	H3100C2070	Hinge pin	1	1	1		
B17	H2009B0732	Arm shaft bushing(right)	1	1	1		
B18	HA300B2110	Rubber plug	1	1	1		
B19	H3100C2050	Oil wick	1	1	1		
B20	H3100C2030	Oil wick	1	1	1		
B21	HA100C2020	Screw	1	1	1		SM15/64(28)×10
B22	H3100C2020	Hinge pin	1	1	1		
B23	H3100C2010	Thread take-up lever	1	1	1		
B24	H3100C2040	Slide lever	1	1	1		
B25	H4200C2060	Needle bar connecting stud			1		
B25	H3100C2060	Needle bar connecting stud	1	1			
B26	HA100C2070	Set screw	1	1			SM9/32 (28)
B26	H4206C8001	Screw			1		SM9/32 (28)
B27	H3100C2130	Arm shaft oil packing stop screw	1	1	1		
B28	H3100C2080	Oil wick	1	1	1		
B29	HA105D0662	Screw	1	1			SM1/4 (40) ×4
B30	HA108C0663	Set screw	1	1			SM1/4 (40) ×7
B30	HA307C0662	Set screw			2		SM1/4 (40) ×6
B31	H3100C2120	Oil wick	1	1	1		
B32	H4204C0651	Needle bar crank			1		
B32	H3100C2090	Needle bar crank	1	1			
B33	H409050140	Screw	2	2	2		
B34	H2017M0067	Bevel gear cover(up-backward)	1	1	1		
B35	H2017M0065	Bevel gear cover(up-forward)	1	1	1		
B36	H31122B104	Felt	1	1	1		
B37	H2009B0731	Felt	1	1	1	1	
B38	HA100C2020	Screw	1	1	1	1	SM15/64(28)×10
B39	H20111C206	Felt	1	1	1	1	

B.ARM SHAFT MECHANISM

Fig. No.	Part No.	Description	GC0618-1	GC0618-1-SC	GC0618-1-D2	Remarks
B40	H20111C106	Oiling felt presser pin	1	1	1	
B41	HA100C2060	Screw	1	1		SM9/32 (28) ×12
B41	H4204C0652	Screw			1	SM9/32 (28) ×12

C. ROTATING HOOK SHAFT MECHANISM



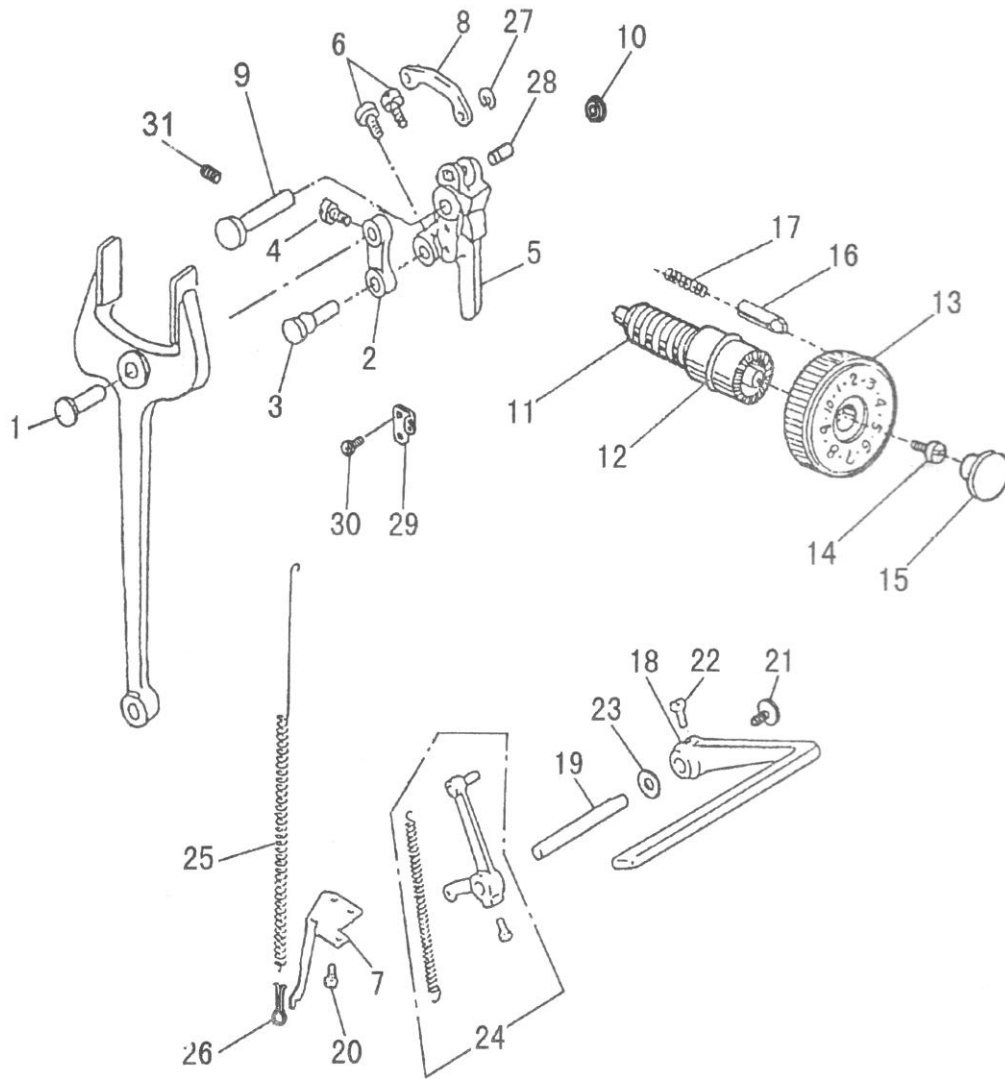
C.ROTATING HOOK SHAFT MECHANISM

Fig. No.	Part No.	Description	GC0618-1	GC0618-1-SC	GC0618-1-D2	Remarks
C01	HA900E2030	Bobbin case complete			1	
C01	H3100D2170	Bobbin case complete		1		
C01	HA600E2080	Bobbin case complete	1			
C02	HA600E2060	Bobbin			1	
C02	H1100E2010	Bobbin	1	1		
C03	H2200C2050	Rotating hook complete			1	
C03	H3100D2160	Rotating hook complete		1		
C03	H2300E2010	Rotating hook complete	1			
C04	H2000M0070	Spring for oil adjusting screw	1	1	1	
C05	H4200D2010	Rotating hook positioner			1	
C05	HA600E2040	Rotating hook positioner	1	1		
C06	HA100E2150	Screw	1	1	1	SM11/64(40)×10
C07	H2009B0772	Hook shaft bushing(left)			1	
C08	H2000M0060	Oil adjusting screw			1	
C09	H2200C2030	Rotating hook shaft			1	
C09	H3100D2050	Rotating hook shaft(left)		1		
C09	H2000E2030	Rotating hook shaft	1			
C10	H2009B0751	Hook shaft bushing(right)	1		1	
C10	H31185B104	Hook shaft bushing(right)		1		
C11	H2009B0711	Felt	1		1	
C11	H31185B204	Felt		1		
C12	H2000I2080	Screw	1	1	1	SM11/64(40)×8.5
C13	HA113D2212	Bevel gear for hook shaft	1	1	1	
C14	HA108C0663	Set screw	4	4	4	SM1/4 (40) ×7
C15	HA113D2222	Bevel gear for vertical shaft(lower)	1	1	1	
C16	H2009B0711	Felt	1	1	1	
C17	HA100C2020	Screw	1	1	1	SM15/64(28)×10
C18	H2009B0721	Vertical shaft bushing(lower)	1	1	1	
C19	H3104D0651	Vertical shaft	1	1	1	
C20	H2009B0711	Felt	1	1	1	
C21	HA100C2020	Screw	1	1	1	SM15/64(28)×10
C22	H31196B104	Vertical shaft bushing(up)	1	1	1	
C23	HA108C0663	Set screw	2	2	2	SM1/4 (40) ×7
C24	HA113D2122	Bevel gear for vertical shaft(up)	1	1	1	
C25	H2009B0712	Oil wick	2	2	2	
C26	H2018M0066	Bevel gear cover(lower-backward)	1	1	1	
C27	HA300B2110	Rubber plug	2	2	2	
C28	H409050140	Screw	1	1	1	M5×14
C29	H2018M0065	Bevel gear cover(lower-forward)	1	1	1	
C30	H2008M0065	Oil pipe	1	1	1	
C31	H2008M0066	Felt	1	1	1	
C32	H2008M0067	Oiling felt spring	1	1	1	
C33	HA300B2170	Screw	1	1	1	SM11/64(40)×9

C.ROTATING HOOK SHAFT MECHANISM

Fig. No.	Part No.	Description	GC0618-1	GC0618-1-SC	GC0618-1-D2	Remarks
C34	H3100D2060	Push button		1		
C35	H3100D2090	Push button spring		1		
C36	H007013035	Stop ring		1		
C37	H3121D8001	Ratchet wheel		1		
C37	H3100D2080	Hook shaft lock ratchet		1		
C38	HA307C0662	Screw		2		SM1/4 (40) ×6
C38	HA100C2090	Screw		2		SM15/64 (28) ×4.5
C39	HA704B0653	Hook shaft bushing(middle)			1	
C39	H3104B0074	Hook shaft bushing(middle) complete		1		
C40	H2000I2080	Set screw		1		SM11/64(40)×8.5
C41	H3106D0066	Safety clutch complete		1		
C42	H3100D2020	Hook shaft(right)		1		
C43	H3100D2130	Positioner		1		
C44	H3100D2140	Screw		1		
C45	H3100D2120	Positioner		1		
C46	HA100C2090	Screw		2		SM15/64 (28) ×4.5
C47	H3100D2100	Pin		1		
C48	H3100D2150	Fork		1		
C49	H415050120	Screw		1		M5×12
C50	HA810E0691	Thread trimming eccentric			1	
C51	HA810E0692	Screw			2	

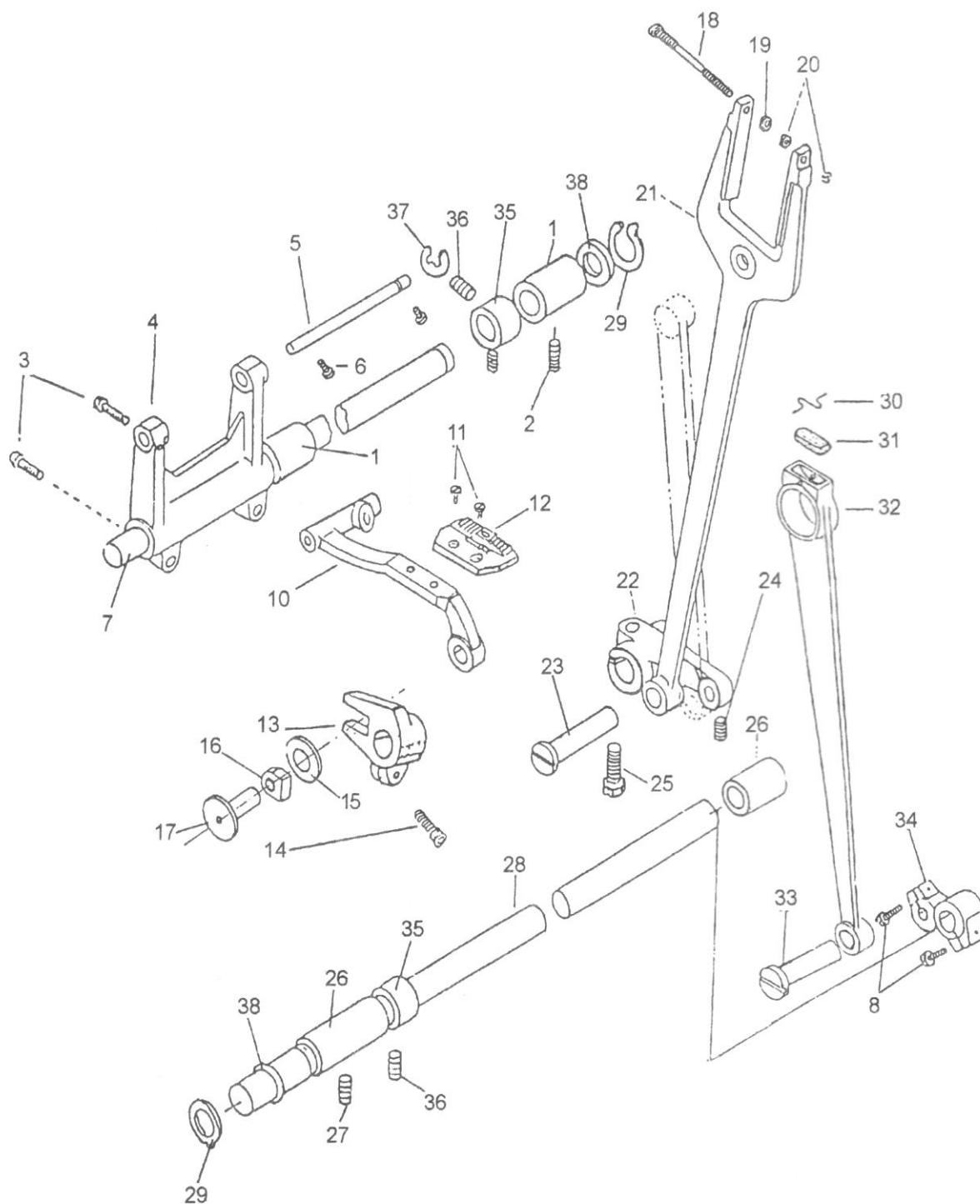
D.STITCH REGULATOR MECHANISM



D.STITCH REGULATOR MECHANISM

Fig. No.	Part No.	Description	GC0618-1	GC0618-1-SC	GC0618-1-D2	Remarks
D01	HA104F0651	Hinge pin	1	1	1	
D02	HA104F0652	Feed connecting link	1	1	1	
D03	H3100E2170	Feed connecting link hinge pin	1	1	1	
D04	HA104F0654	Screw	1	1	1	SM15/64 (28) ×10
D05	H42111E104	Feed regulator cam			1	
D05	H3100E2060	Feed regulator cam	1	1		
D05	H4500E2010	Feed regulator cam				
D06	HA104F0654	Screw	2	2	2	SM15/64 (28) ×10
D07	H2200D2030	Spring retainer			1	
D07	H2000F2030	Spring retainer	1	1		
D08	H2204D0651	Reverse link			1	
D09	H3100E2230	Hinge pin for feed regulator	1	1	1	
D09	H2006C0661	Hinge pin for feed regulator				
D10	HA700B2120	Rubber plug	1	1	1	
D11	HA109F0671	Feed regulator screw bar	1	1	1	
D12	HA109F0674	O-ring	1	1	1	
D13	H1104F0651	Dial			1	
D13	H3100E2070	Dial	1	1		
D14	HA109F0673	Screw	1	1	1	SM3/16 (28) ×8
D15	HA100F2070	Rubber plug	1	1	1	
D16	HA100F2080	Stopper pin	1	1	1	
D17	HA100F2090	Spring for stopper pin	1	1	1	
D18	HA309F0671	Reverse feed lever	1	1	1	
D19	H2005F0065	Reverse feed lever pin	1	1	1	
D20	HA300C2030	Screw	2	2	2	SM11/64(40)×8
D21	HA113F0683	Screw	1	1	1	
D22	HA104F0654	Screw	2	2	2	SM15/64 (28) ×10
D23	HA100F2110	Washer	1	1	1	
D24	H4205E0066	Reverse feed lever crank complete			1	
D24	H3111E0065	Reverse feed lever crank complete	1	1		
D25	H2204D0654	Spring			1	
D26	HA806C0675	Spring retainer			1	
D27	H007013040	Stop ring			1	
D28	H2204D0652	Pin			1	
D29	H2204D0653	Spring retainer			1	
D30	HA100C2190	Screw			2	SM11/64(40)×8
D31	H2405D0664	Screw	1	1	1	

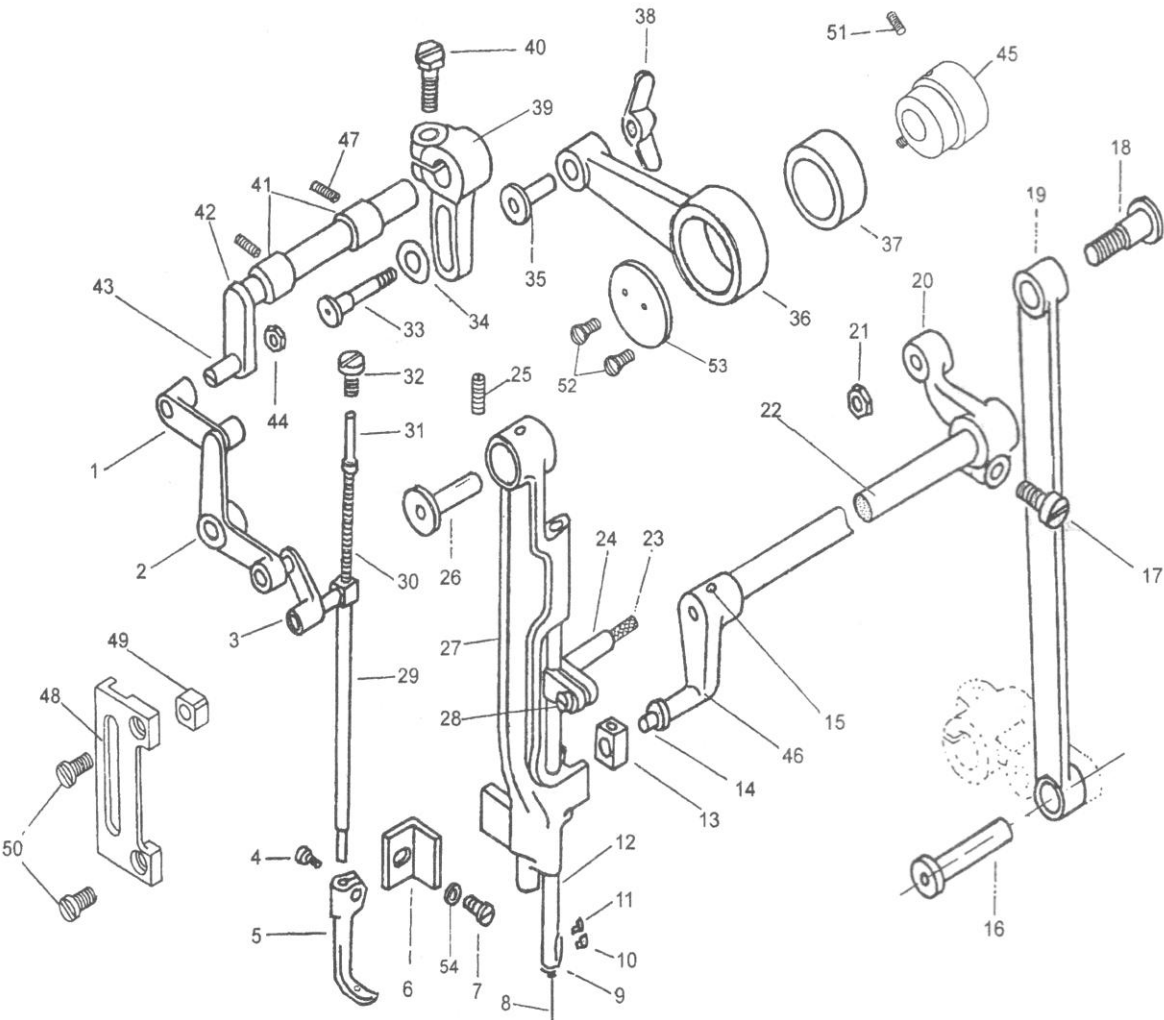
E. LOWER FEEDING MECHANISM



E.LOWER FEEDING MECHANISM

Fig. No.	Part No.	Description	GC0618-1	GC0618-1-SC	GC0618-1-D2	Remarks
E01	H2009B0069	Feed rock shaft bushing	2	2	2	
E02	HA100C2020	Set screw	2	2	2	SM15/64(28)×10
E03	HA304G0656	Screw	2	2	2	
E04	H3100E2110	Feed rock shaft crank	1	1	1	
E05	H3100E2120	Feed bar shaft	1	1	1	
E06	HA100C2020	Screw	2	2	2	SM15/64(28)×10
E07	H2005L0065	Feed rock shaft	1	1	1	
E08	HA104G0012	Screw	2	2	2	
E10	H3116E0661	Feed bar	1	1	1	
E11	HA104G0654	Screw	2	2	2	SM1/8(44)×6
E12	H3100E2160	Feed dog	1	1		
E12	H4206E0671	Feed dog			1	
E12	H4500E2020	Feed dog				
E13	H3100E2140	Feed lifting rock shaft crank(left)	1	1	1	
E14	H415050120	Screw	2	2	2	M5×12
E15	H3100E2200	Washer	1	1	1	
E16	H3100E 2190 ²²¹⁰	Slide block	1	1	1	
E17	HA305G1012	Slide block shaft	1	1	1	
E18	H3100E2050	Screw	1	1	1	
E19	H3100E2180	Nut 1	1	1	1	M4
E20	H3100E2190	Nut 2	2	2	2	M3
E21	H3100E2040	Feed forked connection	1	1	1	
E22	H3100E2090	Feed rock shaft crank	1	1	1	
E23	HA100G2070	Feed rock shaft crank hinge pin	1	1	1	
E24	HA104F0654	Screw	3	3	3	SM15/64 (28) ×10
E25	H3100E2100	Screw	1	1	1	
E26	H2009B0069	Feed lifting rock shaft bushing	2	2	2	
E27	HA100C2020	Screw	2	2	2	SM15/64(28)×10
E28	H2004K0065	Feed lifting rock shaft	1	1	1	
E29	H007009150	Stop ring	2	2	2	
E30	H20111C106	Oiling felt spring	1	1	1	
E31	H20111C206	Felt	1	1	1	
E32	H3100E2030	Feed lifting link	1	1	1	
E33	HA100G2070	Feed rock shaft crank hinge pin	1	1	1	
E34	HA306G0671	Feed lifting rock shaft crank(right)	1	1	1	
E35	HA108G0661	Feed rock shaft collar	2	2	2	
E36	HA105D0662	Set screw	4	4	4	SM1/4(40)×4
E37	H007013050	Stop ring	1	1	1	
E38	HA100G2130	Washer	2	2	2	

F.NEEDLE BAR FEEDING MECHANISM



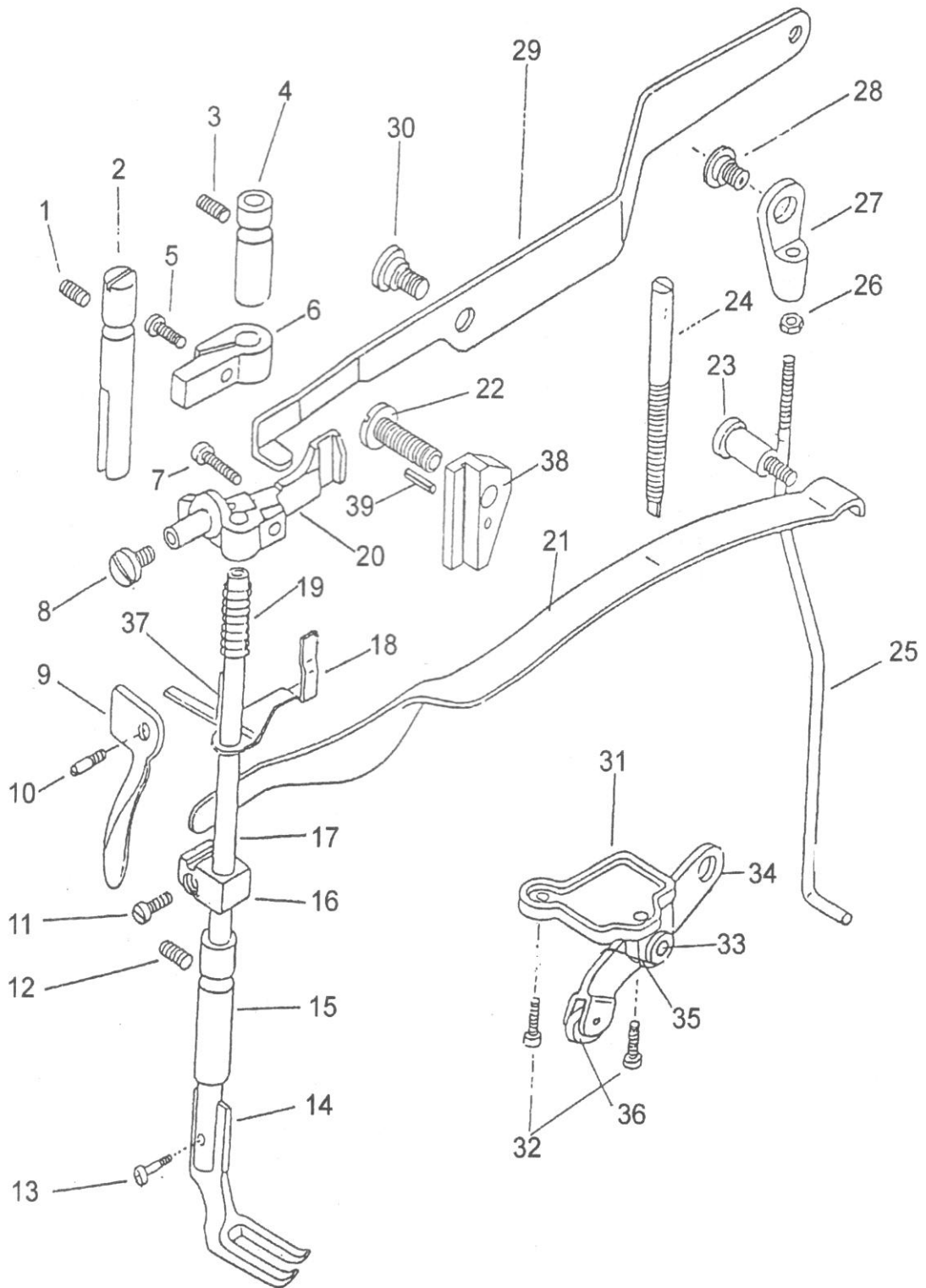
F.NEEDLE BAR FEEDING MECHANISM

Fig. No.	Part No.	Description	GC0618-1	GC0618-1-SC	GC0618-1-D2	Remarks
F01	H3100F2010	Crank link	1	1	1	
F02	H3100F2020	Lifting bell crank	1	1	1	
F03	H3100F2030	Link	1	1	1	
F04	HA700F2100	Screw	1	1	1	
F05	H3111F0651	Vibrating presser foot	1	1	1	
F06	H3100F2240	Needle bar rack frame position bracket	1	1	1	
F07	H3400C2020	Screw	1	1	1	
F08	H2000G2030	Needle	1	1	1	DP×17 22#
F09	H3129F0693	Needle bar thread guide	1	1	1	
F09	HA500C2030	Needle bar thread guide				
F10	H3129F0691	Screw	1	1	1	SM3/32(56)×2.5
F11	HA100C2170	Screw	1	1	1	SM1/8 (44) ×4.5
F12	H3129F0692	Needle bar	1	1	1	
F12	H4500F2040	Needle bar complete				
F13	H3100F2270	Needle bar rock frame slide block	1	1	1	
F14	H3406C0671	Needle bar rock frame slide block stud	1	1	1	
F15	H602040240	Set screw	1	1	1	
F16	HA100G2070	Hinge pin	1	1	1	
F17	H3132F0712	Screw	1	1	1	
F18	H3100F2310	Screw	1	1	1	
F19	H3100F2300	Needle bar rock frame rock shaft crank connect	1	1	1	
F20	H3132F0711	Needle bar rock frame rock shaft crank (right)	1	1	1	
F21	H2010J0066	Nut	1	1	1	
F22	H3131F0703	Needle bar rock frame rock shaft	1	1	1	
F23	H3126F0683	Oil wick	1	1	1	
F24	H4200F2010	Needle bar adaptor	1	1	1	
F24	H4500F2030	Needle bar adaptor				
F25	HA100C2020	Screw	1	1	1	SM15/64(28)×10
F26	H3100F2200	Needle bar rock frame hinge stud	1	1	1	
F27	H3100F2220	Needle bar rock frame	1	1	1	
F28	HA7311CD06	Screw	1	1	1	
F29	H3100F2070	Vibrating presser bar	1	1	1	
F30	H3100F2060	Vibrating presser bar extension spring	1	1	1	
F31	H3100F2050	Vibrating presser bar extension	1	1	1	
F32	H3100F2040	Screw	1	1	1	
F33	H3100F2130	Screw	1	1	1	
F34	H005001060	Washer	1	1	1	
F35	H3100F2150	Lifting eccentric connecting collar	1	1	1	
F36	H3100F2170	Lifting eccentric connection	1	1	1	
F37	H3100F2180	Needle bearing for lifting eccentric connection	1	1	1	
F38	H3100F2160	Nut	1	1	1	
F39	H3115F0672	Lifting eccentric connecting crank	1	1	1	
F40	H3115F0671	Screw	1	1	1	

F.NEEDLE BAR FEEDING MECHANISM

Fig. No.	Part No.	Description	GC0618-1	GC0618-1-SC	GC0618-1-D2	Remarks
F41	H3100F2100	Lifting rock shaft bushing	2	2	2	
F42	H3112F0663	Lifting rock shaft	1	1	1	
F43	H3112F0661	Screw	1	1	1	
F44	H3112F0662	Nut	1	1	1	
F45	H3100F2330	Lifting eccentric	1	1	1	
F46	H3131F0704	Needle bar rock frame rock shaft crank(left)	1	1	1	
F47	HA100B2110	Set screw	2	2	2	SM11/64(40)×5.5
F48	H3100F2340	Guide for slide block	1	1	1	
F49	H3100F2350	Slide block	1	1	1	
F50	H3100F2360	Screw	2	2	2	SM9/64(40)×7
F51	HA105D0662	Screw	2	2	2	
F52	HA7311C306	Screw	2	2	2	
F53	H3100F2370	Stop plate	1	1	1	
F54	H3200I2030	Washer	1	1	1	

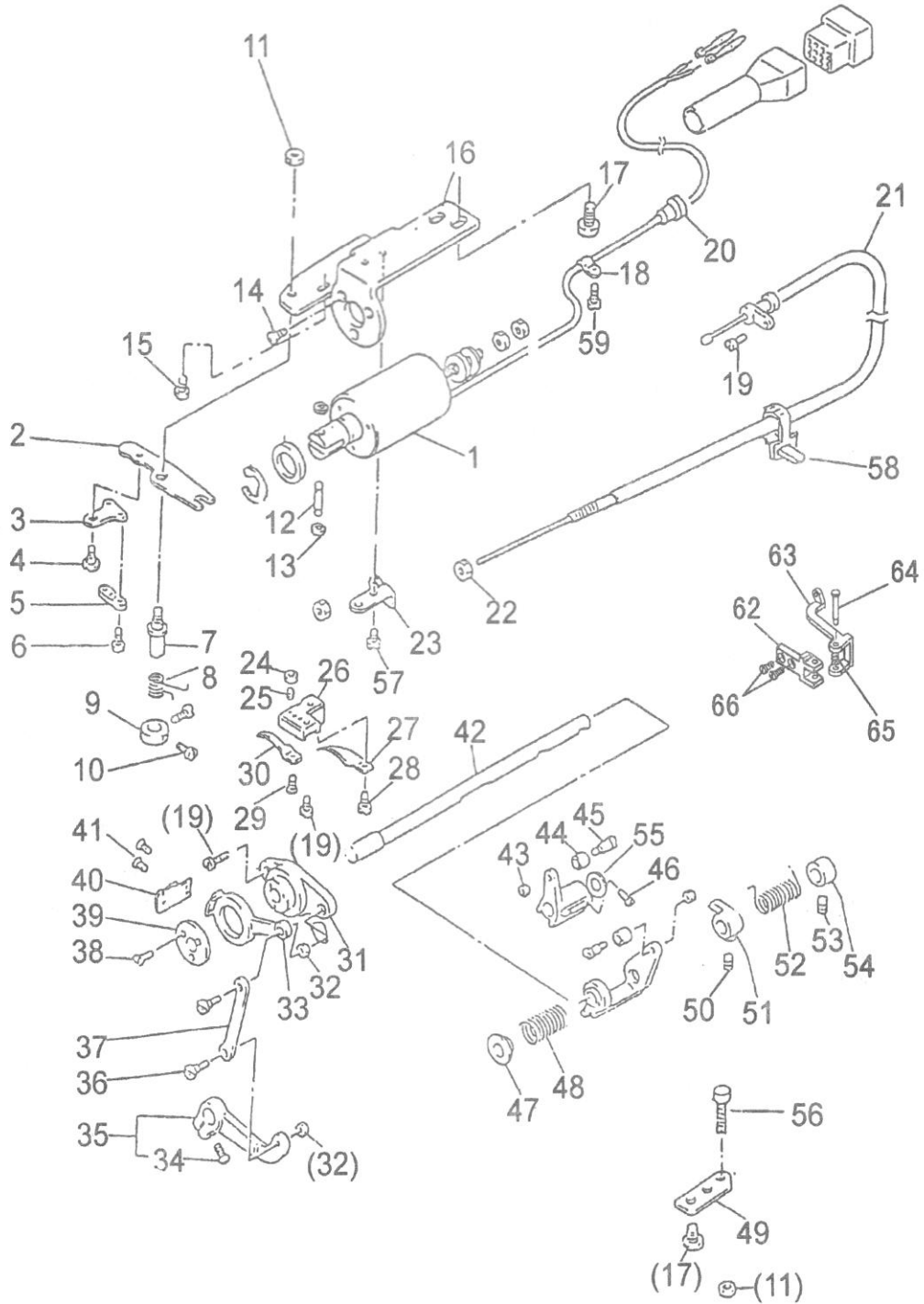
G.PRESSER FOOT MECHANISM



G.PRESSER FOOT MECHANISM

Fig. No.	Part No.	Description	GC0618-1	GC0618-1-SC	GC0618-1-D2	Remarks
G01	HA3411D308	Set screw	1	1	1	
G02	H3100G2020	Presser bar position guide	1	1	1	
G03	HA100C2020	Set screw	1	1	1	
G04	H3104B0654	Presser bar bushing(upper)	1	1	1	
G05	H2404I0034	Screw	1	1	1	
G06	H3106G0652	Presser bar position guide bracket	1	1	1	
G07	H3107G0661	Screw	1	1	1	
G08	H3107G0662	Screw	1	1	1	
G09	H3100G2070	Presser bar lifter	1	1	1	
G10	H3100G2080	Screw	1	1	1	
G11	H2404I0034	Screw	1	1	1	
G12	HA100C2020	Screw	1	1	1	
G13	H3100G2120	Screw	1	1	1	SM9/64(40)×6
G14	H3100G2110	Lifting presser foot	1	1	1	
G14	H4504G0065	Lifting presser foot complete				
G15	H3104B0656	Presser bushing(lower)	1	1	1	
G16	H3113G0671	Presser bar spring bracket	1	1	1	
G17	H3100G2090	Presser bar	1	1	1	
G18	H3109G0651	Tension release slide	1	1	1	
G19	H3100G2050	Tension release spring	1	1	1	
G20	H3107G0663	Presser bar lifting bracket	1	1	1	
G21	H3100G2150	Presser bar spring	1	1	1	
G22	H3100G2220	Screw	1	1	1	SM1/4(24)×20
G23	H3100G2170	Screw	1	1	1	
G24	H3100G2160	Screw	1	1	1	
G25	H3100G2240	Knee lifter lifting lever connecting rod	1	1	1	
G26	H2000I2160	Nut	1	1	1	
G27	H2000I2150	Knee lifter lifting lever connecting rod joint	1	1	1	
G28	H2000I2140	Screw	1	1	1	
G29	H3100G2140	Knee lifter lifting lever	1	1	1	
G30	H3100G2130	Screw	1	1	1	
G31	H3128G0651	Knee lifter bell crank base	1	1	1	
G32	H2000I2200	Screw	1	1	1	
G33	H604050180	Pin	1	1	1	
G34	H3128G0652	Knee lifter bell crank	1	1	1	
G35	H2000I2190	Spring for knee lifter bell crank	1	1	1	
G36	H2021I0068	Roller	1	1	1	
G37	H3109G0652	Guide for tension release slide	1	1	1	
G38	H3100G2210	Presser bar lifting bracket guide	1	1		
G38	H4206C8001	Presser bar lifting bracket guide			1	
G39	H609025180	Spring pin	1	1	1	

H.KNIFE MECHANISM



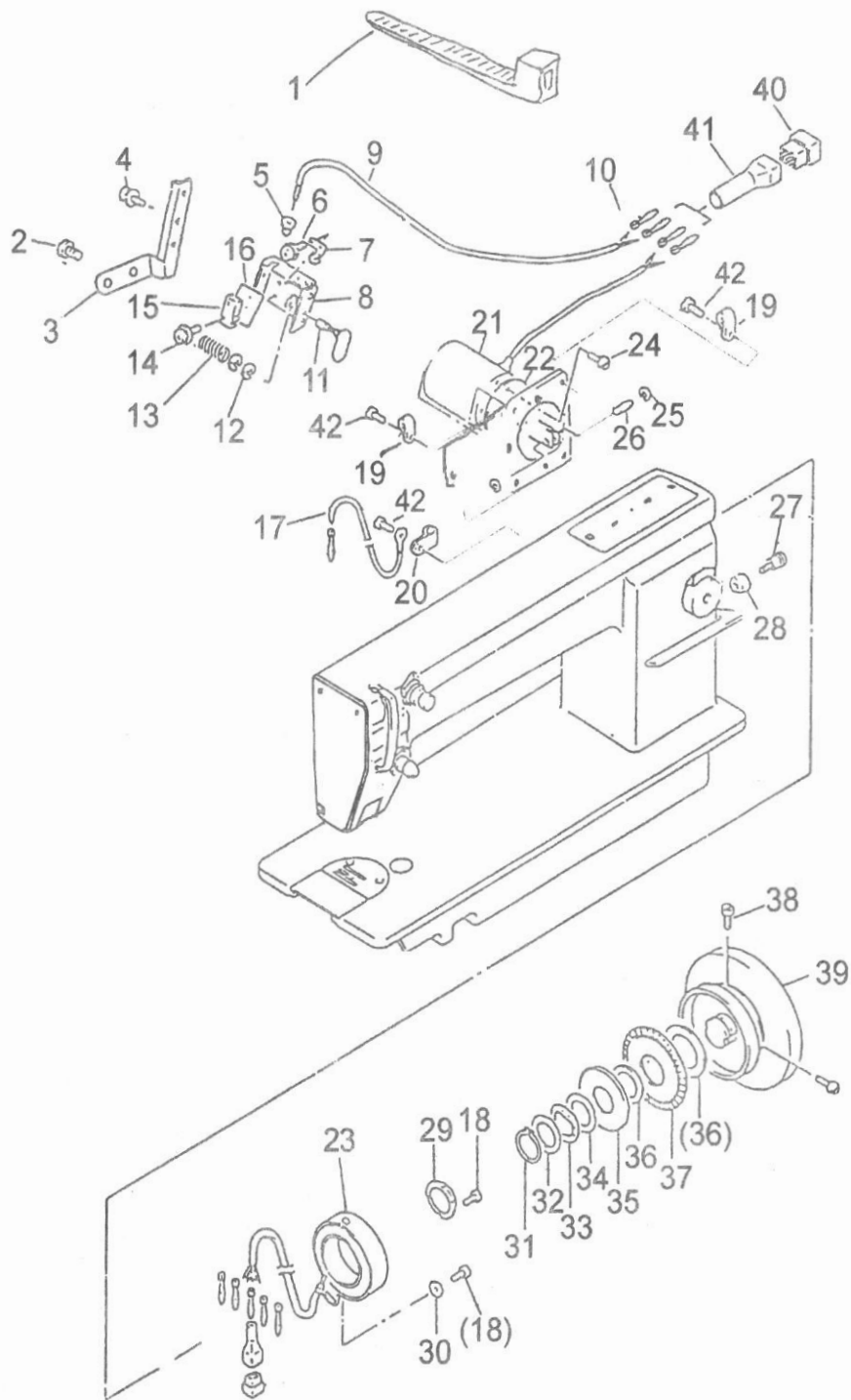
H.KNIFE MECHANISM

Fig. No.	Part No.	Description	GC0618-1	GC0618-1-SC	GC0618-1-D2	Remarks
H01	HA7511N112	Solenoid			1	
H02	HA712N0698	Thread trimmer driving lever			1	
H03	HA712N6910	Flexible wire presser			1	
H04	HA712N0699	Screw			1	SM11/64(40)×4
H05	HA712N6911	Flexible wire presser			1	
H06	HA712N6912	Screw			2	SM1/8(44)×7
H07	HA712N0695	Stud screw			1	
H08	HA712N0697	Spring			1	
H09	HA712N0696	Collar			1	
H10	HA7311CC06	Screw			2	
H11	HA710N0683	Nut			1	
H12	HA712N0692	Link stud			1	
H13	H007013040	Washer			2	
H14	HS90011406	Screw			3	M4×6
H15	HA100E2150	Screw			1	SM11/64(40)×10
H16	HA7511N212	Solenoid bracket			1	
H17	HA700N0080	Screw			4	SM15/64(28)×12
H18	HA708P0668	Cord holder			4	
H19	HA300B2170	Screw			1	
H20	HA704O0657	Rubber plug			1	
H21	HA713N0070	Flexible wire complete			1	
H22	H003002050	Nut			2	M5
H23	H2208H0681	Flexible wire base			1	
H24	HA7121N704	Nut			2	SM9/64(40)
H25	HA7121N604	Screw			1	SM9/64(40)×8.5
H26	HA7121N104	Bracket for fixed blade			1	
H27	H22121H204	Thread finger			1	
H28	HA7311CH06	Screw			1	SM9/64(40)×8
H29	HA7121N304	Screw			1	SM9/64(40)×5
H30	H4204H1111	Fixed blade			1	
H31	HA704N1111	Knife holding bracket saddle			1	
H32	HA7111N304	Nut			2	SM11/64(40)
H33	HA904N1111	Knife holding bracket saddle(left)			1	
H34	HA719B7011	Screw			1	SM11/64(40)×11.4
H35	HA7111N604	Knife driving crank			1	
H36	HA7111N204	Screw			2	SM11/64(40)×6.2
H37	HA7111N404	Link			1	
H38	HA704N1114	Screw			3	SM1/8(44)×5.2
H39	HA704N1113	Washer			1	
H40	H2204H0651	Fixed blade			1	
H41	HA7111N704	Screw			2	SM11/64(40)×5.5
H42	H2200H2020	Driving crank shaft			1	
H43	HA706N0663	Nut			2	

H.KNIFE MECHANISM

Fig. No.	Part No.	Description	GC0618-1	GC0618-1-SC	GC0618-1-D2	Remarks
H44	HA7221N106	Roller			2	SM15/64(28)×8.5
H45	HA7221N206	Roller pin			2	
H46	HA113F0684	Screw			2	
H47	HA700N0050	Spring cover			1	
H48	HA700N0040	Spring			1	
H49	HA710N0682	Lever stopper plate			1	
H50	HA307C0662	Screw			1	
H51	H2206H0661	Stopper lever			1	
H52	HA700N0110	Coil spring			1	
H53	HA715N0711	Collar			1	
H54	HA105D0662	Screw			1	
H55	HA706N0664	Washer			1	
H56	H2207H0671	Screw			1	
H57	HA300C2030	Screw			2	
H58	HA300I2040	Wire holder			1	
H59	HA300B2170	Screw			2	
H60	HA7211N106	Crank 1			1	
H61	HA7211N206	Crank 2			1	
H62	H4205C0661	Hinge pin bracket			1	
H63	H4205C0662	Hinge pin			1	
H64	H4205C0663	Pin			1	
H65	H4205C0664	Spring			1	
H66	HA104G0654	Screw			2	

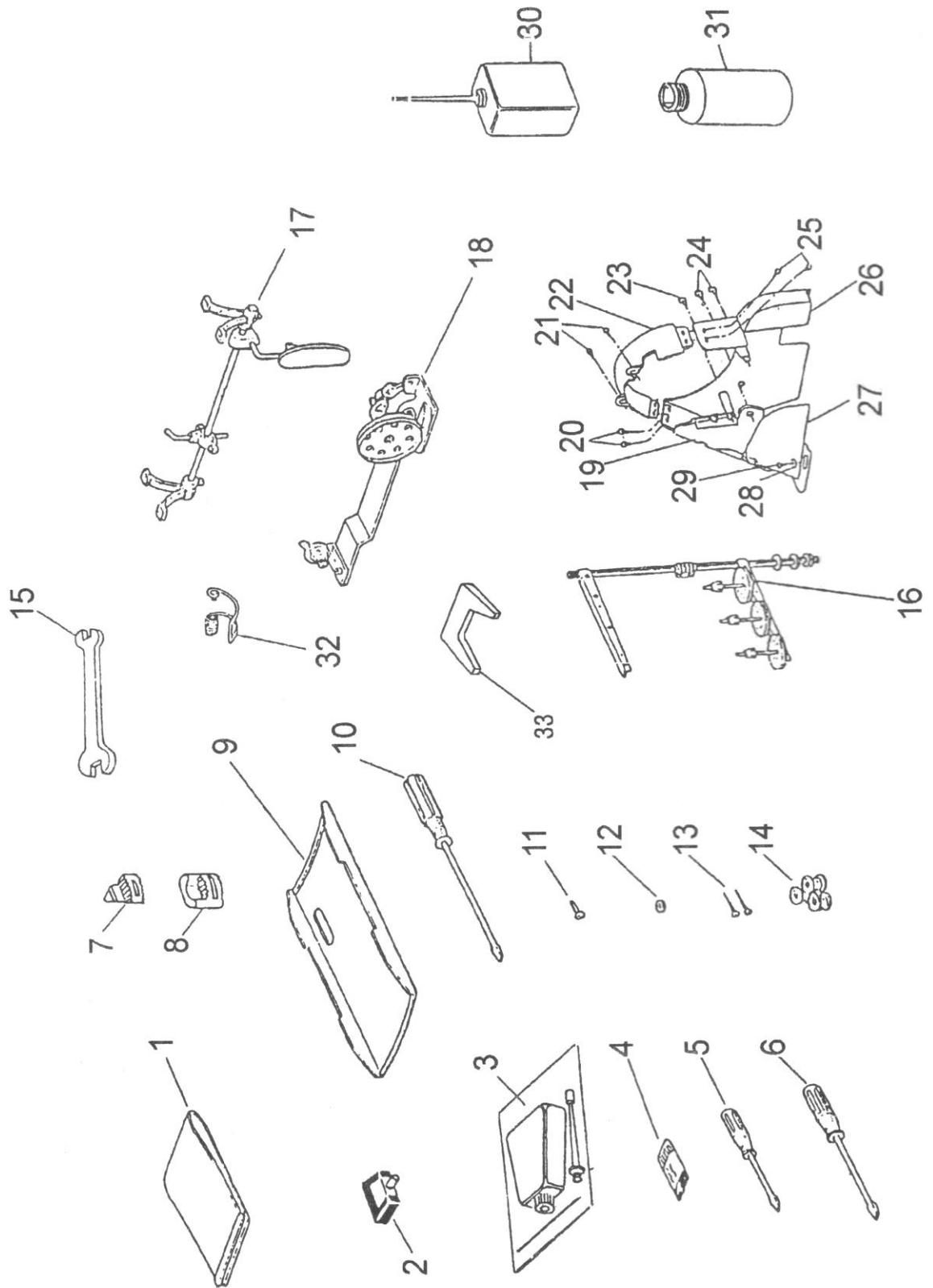
I. TOUCH BACK AND DETECTOR MECHANISM



I.TOUCH BACK AND DETECTOR MECHANISM

Fig. No.	Part No.	Description	GC0618-1	GC0618-1-SC	GC0618-1-D2	Remarks
I01	HA300I2040	Wire holder			1	
I02	HA300B2170	Screw			2	
I03	H4204I0651	Switch bracket			1	
I04	H411030060	Screw			2	
I05	HA704O0657	Rubber plug			1	
I06	HA704O0659	Screw			2	
I07	HA704O0654	Plate spring			1	
I08	H2205I0661	Switch bracket			1	
I09	HA7161O104	Switch wire			1	
I10	HA7641B319	Tie-in			2	
I11	HA704O0021	Touch switch complete			1	
I12	H007013030	Stop ring			2	
I13	HA704O0653	Spring			1	
I14	HA704O6510	Screw			2	
I15	HA704O0655	Micro switch			1	
I16	HA704O0658	Insulator seat			1	
I17	HA705Q0065	Ground wire assy.			1	
I18	HA300C2030	Screw			2	
I19	HA708P0668	Cord holder			4	
I20	HA700Q0050	Cord holder			1	
I21	H2206I0673	Solenoid			1	
I22	H2609E0674	Washer			1	
I23	HA703R0065	Detector complete			1	
I24	HA300C2030	Screw			4	
I25	H007013040	Washer			2	
I26	HA712N0692	Link stud			1	
I27	H2204G0651	Screw			1	
I28	H2204G0652	Stop ring			1	
I29	HA703R0066	Detector bracket supporter			1	
I30	HA703R0067	Washer			1	
I31	H007009300	Stop ring			1	
I32	HA700R0060	Washer			1	
I33	HA700R0050	Supporter spring			1	
I34	HA700R0040	Spacer 2			1	
I35	HA700R0020	Speed command disc 2			1	
I36	HA700R0030	Spacer 1			2	
I37	HA700R0010	Speed command disc 1			1	
I38	HA110D0672	Screw			2	SM15/64(28)×12
I39	H2204I0651	Balance wheel			1	
I40	HA700Q0010	Pin			1	
I41	HA7641B319	Tie-in			1	
I42	HA300B2160	Screw			3	SM11/64(40)×10

J.ACCESSORIES



J.ACCESSORIES

Fig. No.	Part No.	Description	GC0618-1	GC0618-1-SC	GC0618-1-D2	Remarks
J01	HA300J2180	Vinyl cover	1	1	1	
J02	HA307J0067	Bed hinge connection	2	2	2	
J03	H2004O0069	Oiler	1	1	1	
J04	H2000G2030	Needle	1	1	1	DP×17 22#
J05	HA300J2210	Screw driver(small)	1	1	1	
J06	HA300J2200	Screw driver(middle)	1	1	1	
J07	H2004O0066	Rubber cushion(small)	2	2	2	
J08	H2004O0065	Rubber cushion(large)	2	2	2	
J09	H2207J0065	Oil pan assy.	1	1	1	
J10	HA300J2070	Screw driver(large)	1	1	1	
J11	H801045200	Screw	2	2	2	4.5×20
J12	HA300J2230	Washer	2	2	2	
J13		Nail	10	10	10	
J14	HA600E2060	Bobbin			3	
J14	H1100E2010	Bobbin	3	3		
J15	HA100J2170	Spanner	1	1	1	
J16	HA200J2030	Thread stand	1	1	1	BZ009
J17	H3104H0065	Knee lifter assy.	1	1	1	
J18	HA905S0066	Bobbin winder mechanism	1	1	1	
J19	H2008O0070	Belt cover	1	1	1	
J20	HA300B2170	Set screw	2	2	2	SM11/64(40)×8
J21	HA300B2170	Set screw	2	2	2	SM11/64(40)×8
J22	H2008O0671	Belt cover with label	1	1	1	
J23	HA300J2250	Screw	1	1	1	M4×12.5
J24	HA300J2280	Screw	2	2	2	
J25	HA300B2170	Screw	2	2	2	
J26	H2008O0067	Belt cover(lower)	1	1	1	
J27	HA305J0665	Belt cover assy.	1	1	1	
J28	HA300J2230	Washer	2	2	2	
J29	H801045200	Screw	2	2	2	4.5×20
J30	H2004O0069	Oiler	1	1	1	
J31	HA600J2030	Oiler	1	1	1	
J32	H3111B0702	Thread tension spring	1	1	1	
J33	HA704S0654	Speed command disc adjusting plate			1	