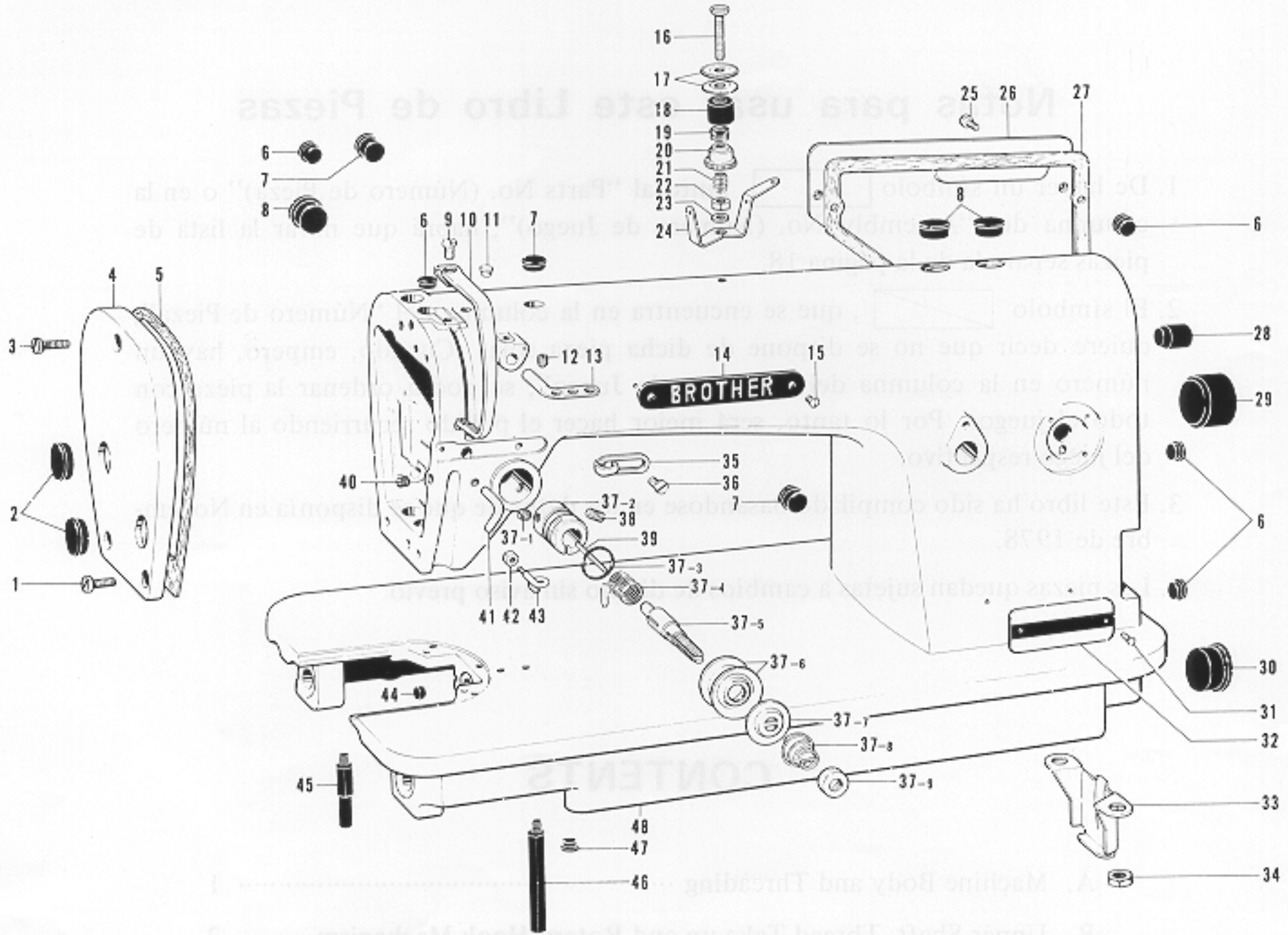
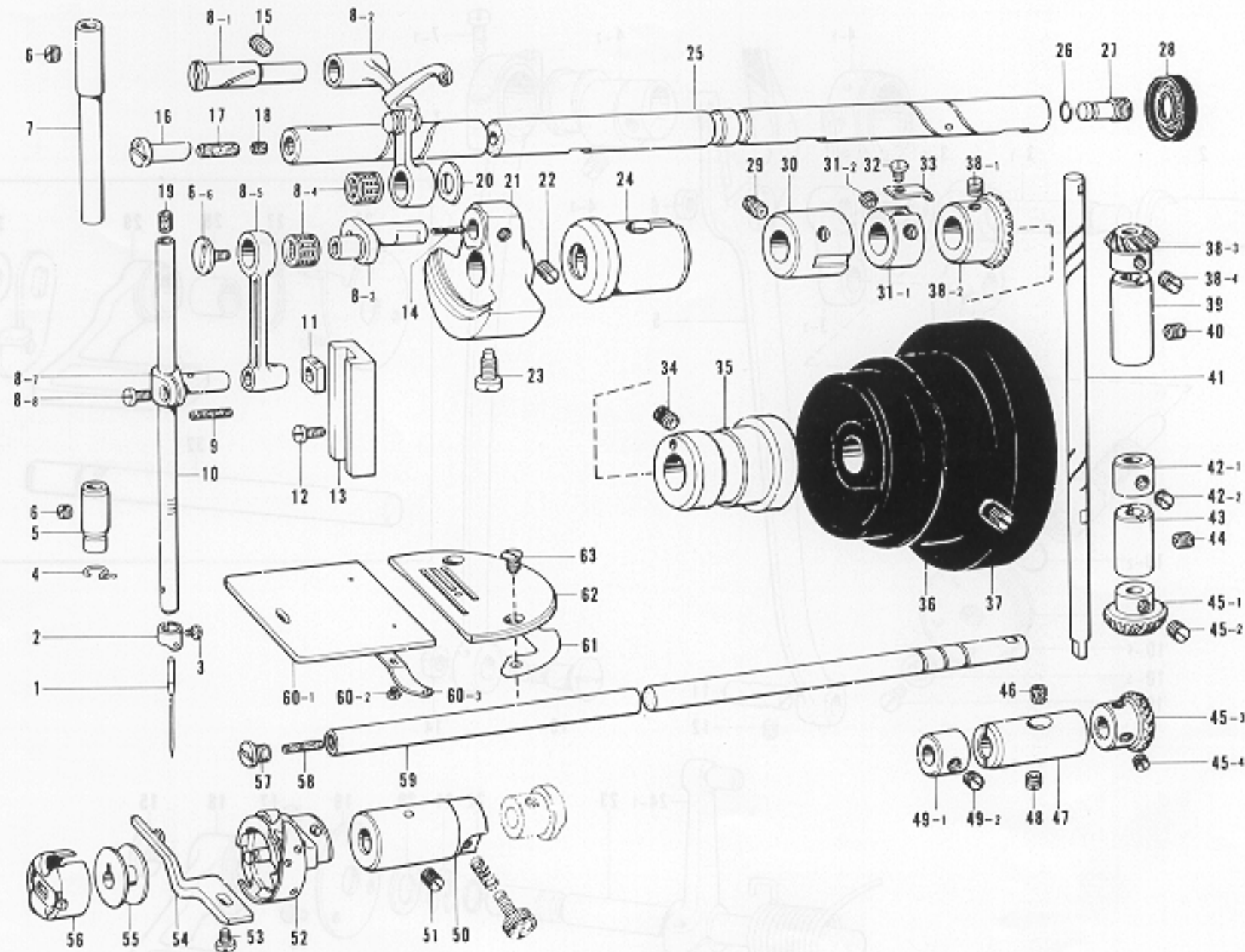


# A. Machine Body and Threading



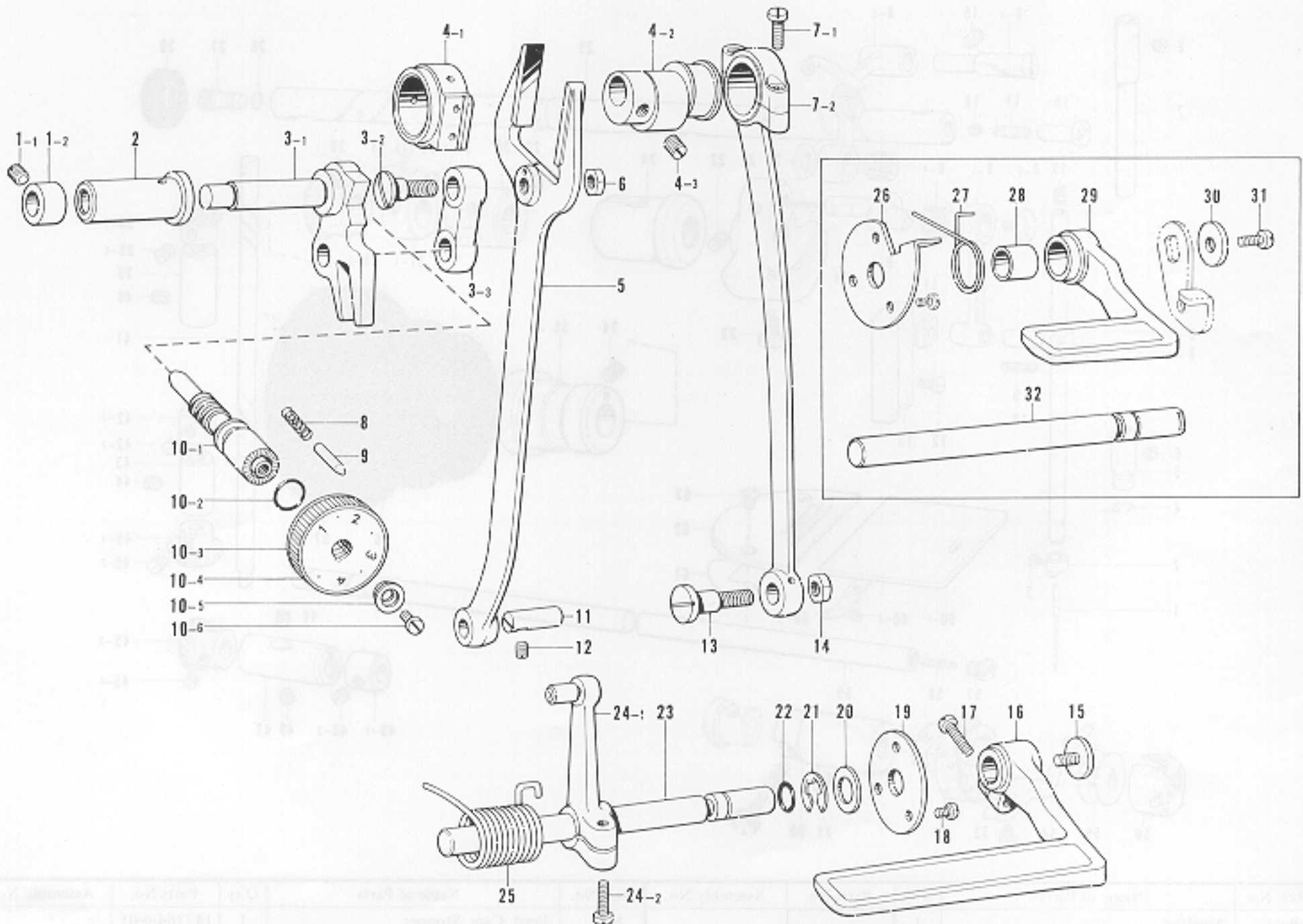
Ref. No.	Name of Parts	Q'ty	Parts No.	Assembly No.	Ref. No.	Name of Parts	Q'ty	Parts No.	Assembly No.
A-1	Screw	2	009671-0-13		A-29	Oil Cap	1	104451-0-01	
A-2	Oil Cap	2	104449-0-01		A-30	Oil Cap	1	108520-0-01	
A-3	Screw	1	009671-8-13		A-31	Model Plate Pin	2		
A-4	Face Plate	1			A-32	Model Plate	1		
A-5	Packing	1	145527-0-00		A-33	Pump Cover	1	145454-0-01	
A-6	Vinyl Cap	5	104450-0-01		A-34	Nut	2	100090-0-04	
A-7	Oil Cap	3	104821-0-01		A-35	Thread Guide	1	145522-0-01	
A-8	Oil Cap	3	104449-0-01		A-36	Screw	1	009670-6-14	
A-9	Screw	1	009680-7-13		A-37-1	Screw	1	100402-0-04	A-37 Tension Regulator Assembly
A-10	Thread Take-up Cover	1	140885-0-02		A-37-2	Upper Tension Regulator Bracket	1	144741-0-01	
A-11	Oil Cap	1	111865-0-01		A-37-3	Packing	1	114294-0-01	
A-12	Screw	1	151602-0-02		A-37-4	Thread Take-up Spring	1	145519-0-01	
A-13	Thread Retainer	1	114931-0-01		A-37-5	Tension Stud	1	100398-0-01	
A-14	Name Plate	1			A-37-6	Tension Disc	2	145446-0-01	
A-15	Screw	2			A-37-7	Tension Disc Washer	1	100134-0-01	
A-16	Pre-Tension Stud	1	146056-0-01		A-37-8	Tension Spring	1		
A-17	Thread Guide Disc	2	147705-0-01		A-37-9	Nut	1	100136-0-01	
A-18	Washer	1	146206-0-01		A-38	Screw	1	103950-0-02	
A-19	Spring	1	146058-0-01		A-39	Tension Release Pin	1	150551-0-00	
A-20	Nut	1	146059-0-01		A-40	Screw	1	011711-4-12	
A-21	Spring	1	146060-0-00		A-41	Thread Guide	1	116112-0-01	
A-22	Nut	1	105234-0-01		A-42	Nut	1	021660-1-02	
A-23	Washer	1	025680-2-34		A-43	Arm Thread Guide	1	145524-0-01	
A-24	Thread Guide Plate	1	146055-0-01		A-44	Cap	1	142274-0-01	
A-25	Screw	5	009670-8-12		A-45	Bed Leg B	1	104830-0-01	
A-26	Rear Cover	1	145455-0-01		A-46	Bed Leg A	1	104829-0-01	
A-27	Packing	1	145528-0-00		A-47	Oil Cap	1	104833-0-01	
A-28	Oil Cap	1	104832-0-01		A-48	Arm Bed	1		

## B. Upper Shaft, Thread Take-up and Rotary Hook Mechanism



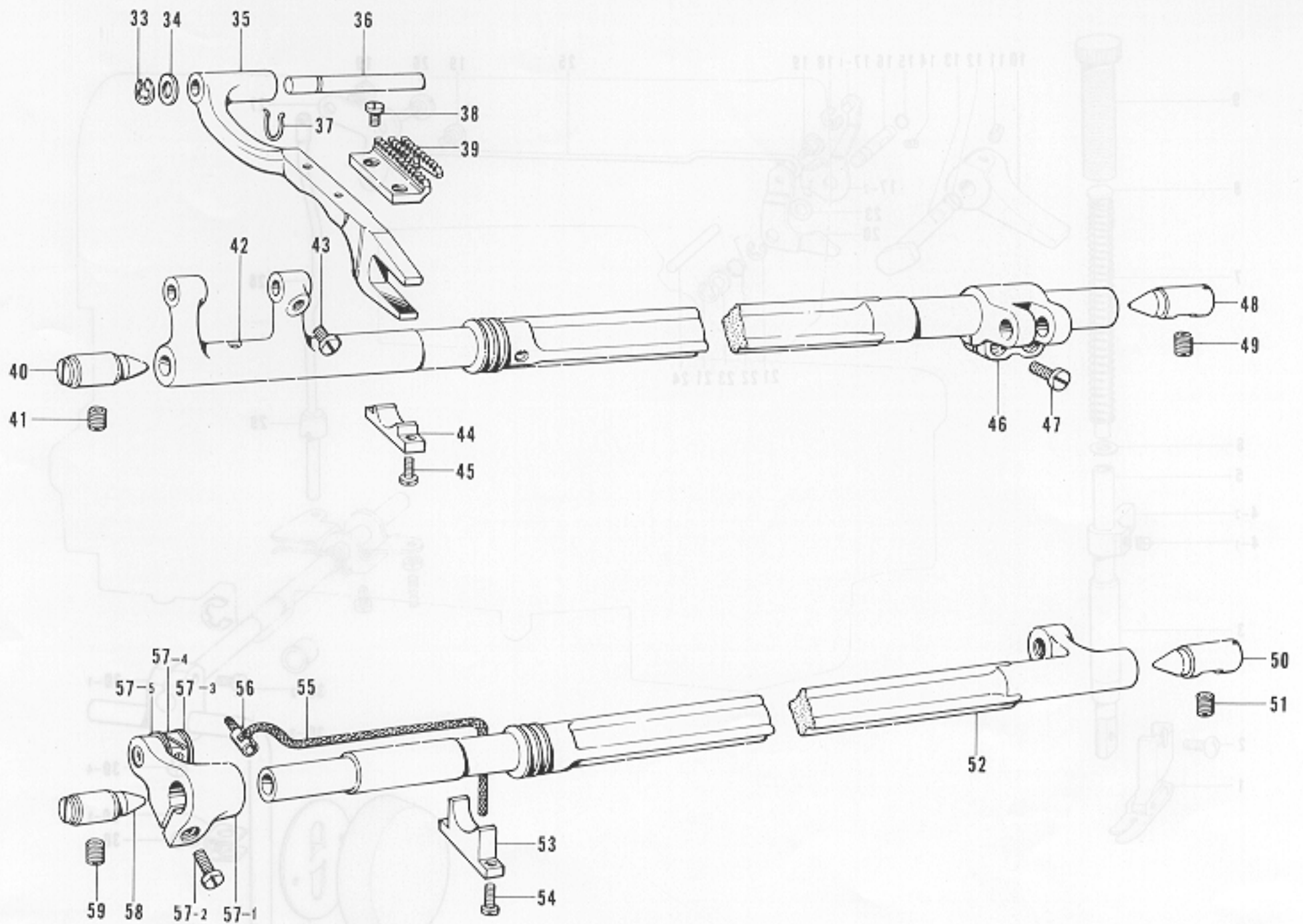
Ref. No.	Name of Parts	Q'ty	Parts No.	Assembly No.	Ref. No.	Name of Parts	Q'ty	Parts No.	Assembly No.
B-1	Needle	1			B-33	Feed Cam Stopper	1	147764-0-01	
B-2	Thread Guide	1	145944-0-01		B-34	Screw	1	013760-6-10	
B-3	Screw	1	140553-0-01		B-35	Upper Shaft Bushing Right	1	145461-1-01	
B-4	Thread Guide	1	145525-0-01		B-36	Pulley	1	148823-0-01	
B-5	Needle Bar Bushing	1			B-37	Screw	2	013761-4-10	
B-6	Screw	2	100260-0-01		B-38-1	Screw	2	151606-0-01	
B-7	Needle Bar Bushing Upper	1	111463-0-01		B-38-2	Gear	1		B-38 Bevel Gear Upper Assembly 140378-0-01
B-8-1	Stad	1		B-8 Thread Take-up Lever Assembly	B-38-3	Gear	1		
B-8-2	Thread Take-up Supporter Assembly	1			B-38-4	Screw	2	151606-0-01	
B-8-3	Needle Bar Crank	1			B-39	Vertical Shaft Upper Bushing	1	142708-0-00	
B-8-4	Needle Bearing	2			B-40	Screw	1	013760-6-10	
B-8-5	Needle Bar Crank Rod	1			B-41	Vertical Shaft	1	145516-0-01	
B-8-6	Screw	1	145465-0-01		B-42-1	Collar	1		B-42 Collar 181995-0-01
B-8-7	Needle Bar Clamp	1			B-42-2	Screw	2	101706-0-03	
B-8-8	Screw	1	140004-0-01		B-43	Vertical Shaft Lower Bushing	1	142709-0-00	
B-9	Wick	1	108809-0-01	B-44	Screw	1	013761-4-10		
B-10	Needle Bar	1		B-45-1	Gear	1		B-45 Bevel Gear Upper Assembly 140381-0-01	
B-11	Block for Needle Bar Guide	1		B-45-2	Screw	2	151606-0-01		
B-12	Screw	2	009670-6-12	B-45-3	Gear	1			
B-13	Needle Bar Guide	1	145688-0-00	B-45-4	Screw	2	151606-0-01		
B-14	Felt	1	145624-0-00	B-46	Felt	1	107155-0-01		
B-15	Screw	1	013781-0-12	B-47	Lower Shaft Bushing Right	1	104520-0-00		
B-16	Oil Adjuster	1	146333-0-01	B-48	Screw	1	151607-0-01		
B-17	Felt	1	146327-0-01	B-49-1	Collar	1		B-49 Collar 181995-0-01	
B-18	Wick	1	107149-0-01	B-49-2	Screw	2	101706-0-03		
B-19	Needle Bar Cork	1	111863-0-01	B-50	Lower Shaft Bushing Left	1	118761-0-00		
B-20	Washer	1	110367-0-01	B-51	Screw	1	151603-0-02		
B-21	Thread Take-up Crank	1	148965-0-00	B-52	Rotary Hook Assembly	1			
B-22	Screw	2	151606-0-01	B-53	Screw	1	107407-0-03		
B-23	Screw	1	104464-0-01	B-54	Bobbin Case Holder Position Bracket	1			
B-24	Upper Shaft Bushing Left	1	145459-1-01	B-55	Bobbin	1	100376-0-01		
B-25	Upper Shaft	1	147511-0-01	B-56	Bobbin Case Assembly	1	148350-1-01		
B-26	O Ring	1	081002-6-70	B-57	Screw	1	109173-0-01		
B-27	Oil Screw Right for Upper Shaft	1	104555-0-01	B-58	Felt	1	145751-0-01		
B-28	Oil Seal	1	101487-0-00	B-59	Lower Shaft	1	145517-0-01		
B-29	Screw	1	151604-0-01	B-60-1	Slide Plate	1		B-60 Slide Plate Assembly 180018-0-01	
B-30	Upper Shaft Bushing Intermediate	1	140726-0-00	B-60-2	Screw	2	122771-0-01		
B-31-1	Set Collar	1		B-60-3	Slide Plate Spring	1	114561-0-01		
B-31-2	Screw	2	151606-0-01	B-61	Needle Plate Washer	1			
B-32	Screw	1	009670-4-12	B-62	Needle Plate	1			
				B-63	Screw	2	100032-0-03		

### C. Feed Mechanism(Part 1)



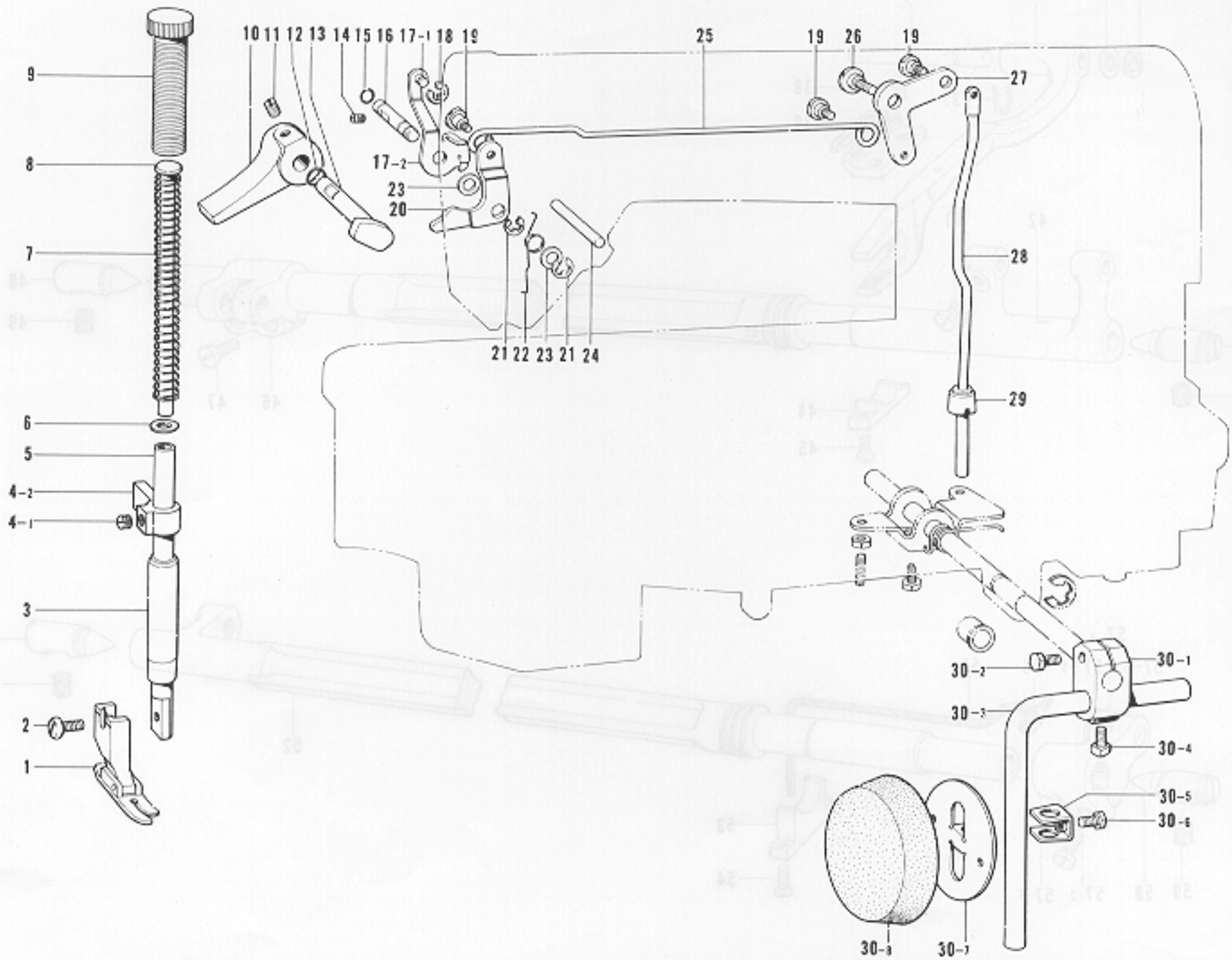
Ref. No.	Name of Parts	Q'ty	Parts No.	Assembly No.	Ref. No.	Name of Parts	Q'ty	Parts No.	Assembly No.
C- 1-1	Screw	1	100260-0-01	C-1 Set Collar Assembly 181934-0-01	C-12	Screw	1	151601-0-02	
C- 1-2	Set Collar	1			C-13	Stud Screw 7.14	1	147509-0-01	
C- 2	Feed Regulator Shaft Bushing	1	147500-0-00		C-14	Nut	1	104689-0-01	
C- 3-1	Feed Regulator	1		C-3 Feed Regulator Assembly 147628-0-01	C-15	Screw	1		
C- 3-2	Screw	1	145486-0-01		C-16	Reverse Lever	1		
C- 3-3	Feed Link	1	147502-0-00		C-17	Screw Lever Plate	1		
C- 4-1	Feed Cam Sleeve	1		C-4 Feed Cam Sleeve Assembly 147573-0-01	C-18	Screw	3	007670-5-13	
C- 4-2	Feed Cam	1			C-19	Reverse	1		
C- 4-3	Screw	2	151604-0-01		C-20	Washer	1	025100-1-32	
C- 5	Feed Forked Connector	1	109147-0-01		C-21	Stop Ring	1	048080-3-42	
C- 6	Nut	1	104689-0-01		C-22	Packing	1	104564-0-01	
C- 7-1	Screw	2	107428-0-01	C-7 Crank Rod Assembly 145506-0-01	C-23	Reverse Lever Shaft	1		
C- 7-2	Crank Rod	1			C-24-1	Lever Assembly	1		C-24 Feed Regulator Lever Assembly 181935-0-01
C- 8	Spring	1	100328-0-01		C-24-2	Screw	1	009711-4-12	
C- 9	Pin	1	145502-0-01		C-25	Spring	1		
C-10-1	Length Control Screw	1	109151-1-01		C-26	Reverse Lever Stopper	1		
C-10-2	Packing	1	108549-0-01		C-27	Reverse Lever Presser Spring	1		
C-10-3	Length Control Dial	1	151320-0-01	C-10 Length Control Assembly	C-28	Collar	1		
C-10-4	Length Control Plate	1			C-29	Reverse Lever	1		
C-10-5	Washer	1	142746-0-02		C-30	Washer	1		
C-10-6	Screw	1	142747-0-02		C-31	Screw	1		
C-11	Feed Rock Shaft Arm Pin	1	109153-0-01		C-32	Reverse Lever Shaft	1		

C. Feed Mechanism(Part 2 )



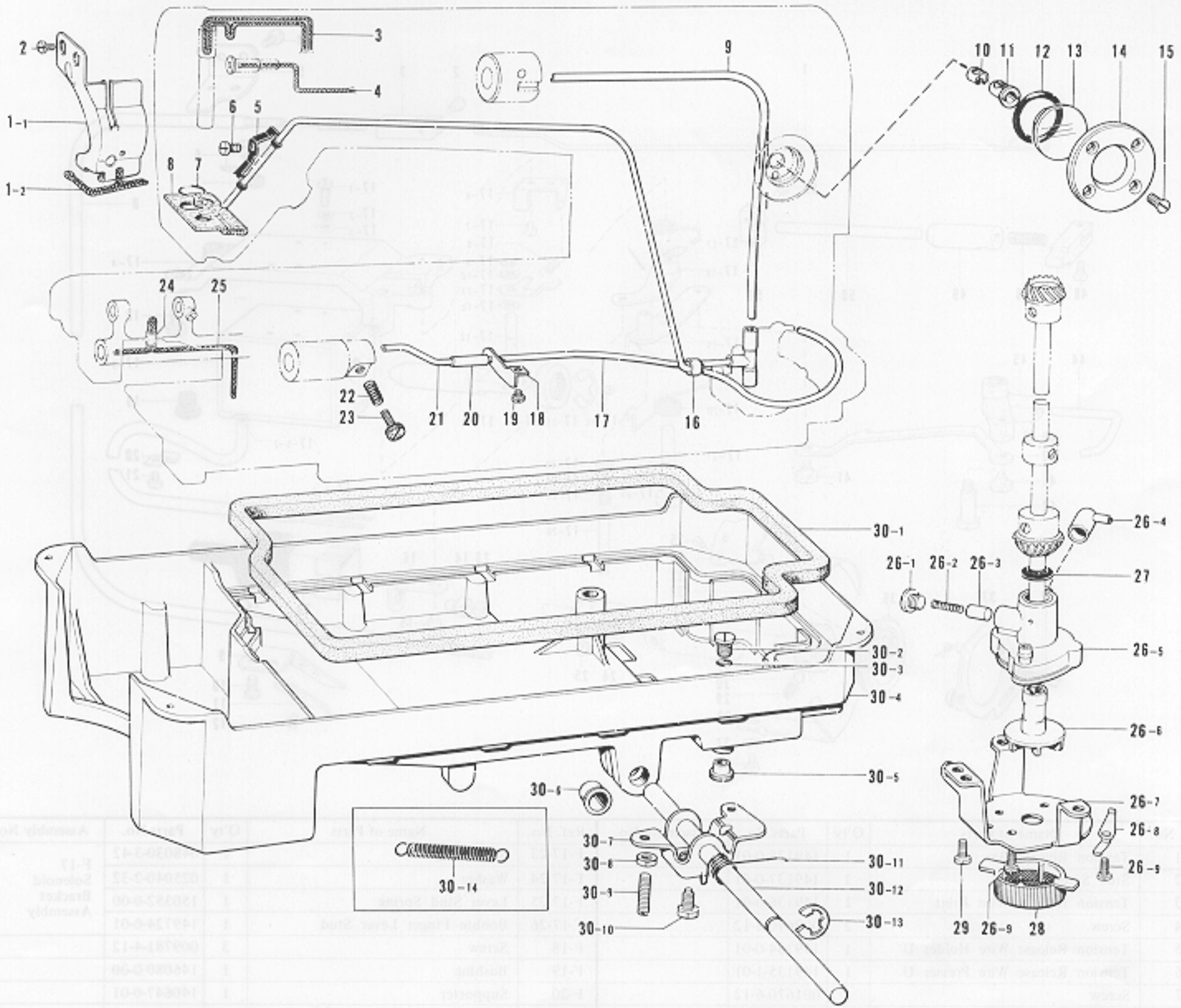
Ref. No.	Name of Parts	Q'ty	Parts No.	Assembly No.	Ref. No.	Name of Parts	Q'ty	Parts No.	Assembly No.
C-33	Stop Ring	1	048080-3-42		C-49	Screw	1	151606-0-01	
C-34	Ring	1	115663-0-01		C-50	Taper Center Right	1	104848-0-01	
C-35	Feed Bar	1	147767-0-01		C-51	Screw	1	151606-0-01	
C-36	Feed Bar Shaft	1	147508-0-01		C-52	Feed Lifting Shaft	1	147510-0-01	
C-37	Wick Hanger	1	150342-0-01		C-53	Oil Stopper	1	118559-0-01	
C-38	Screw	2	100080-0-03		C-54	Screw	2	009670-8-12	
C-39	Feed Dog	1			C-55	Wick	1	108802-0-01	
C-40	Taper Center Left	1	104847-0-01		C-56	Wick Supporter	1	104567-0-01	
C-41	Screw	1	151606-0-01		C-57-1	Feed Lifting Arm	1		C-57 Feed Lifting Arm Assembly 181941-0-01
C-42	Feed Rock Shaft	1	147506-0-01		C-57-2	Screw	1	009681-6-12	
C-43	Screw	1	104908-0-01		C-57-3	Slide Block Stud	1		
C-44	Oil Stopper	1	118558-0-01		C-57-4	Slide Block	1		
C-45	Screw	2	009670-8-12		C-57-5	Washer	1		
C-46	Feed Rock Shaft Arm	1	109152-0-01		C-58	Taper Center Left	1	104847-0-01	
C-47	Screw	2	009681-2-12		C-59	Screw	1	151606-0-01	
C-48	Taper Center Right	1	104848-0-01						

# D. Presser Foot and Knee Lifter Mechanism



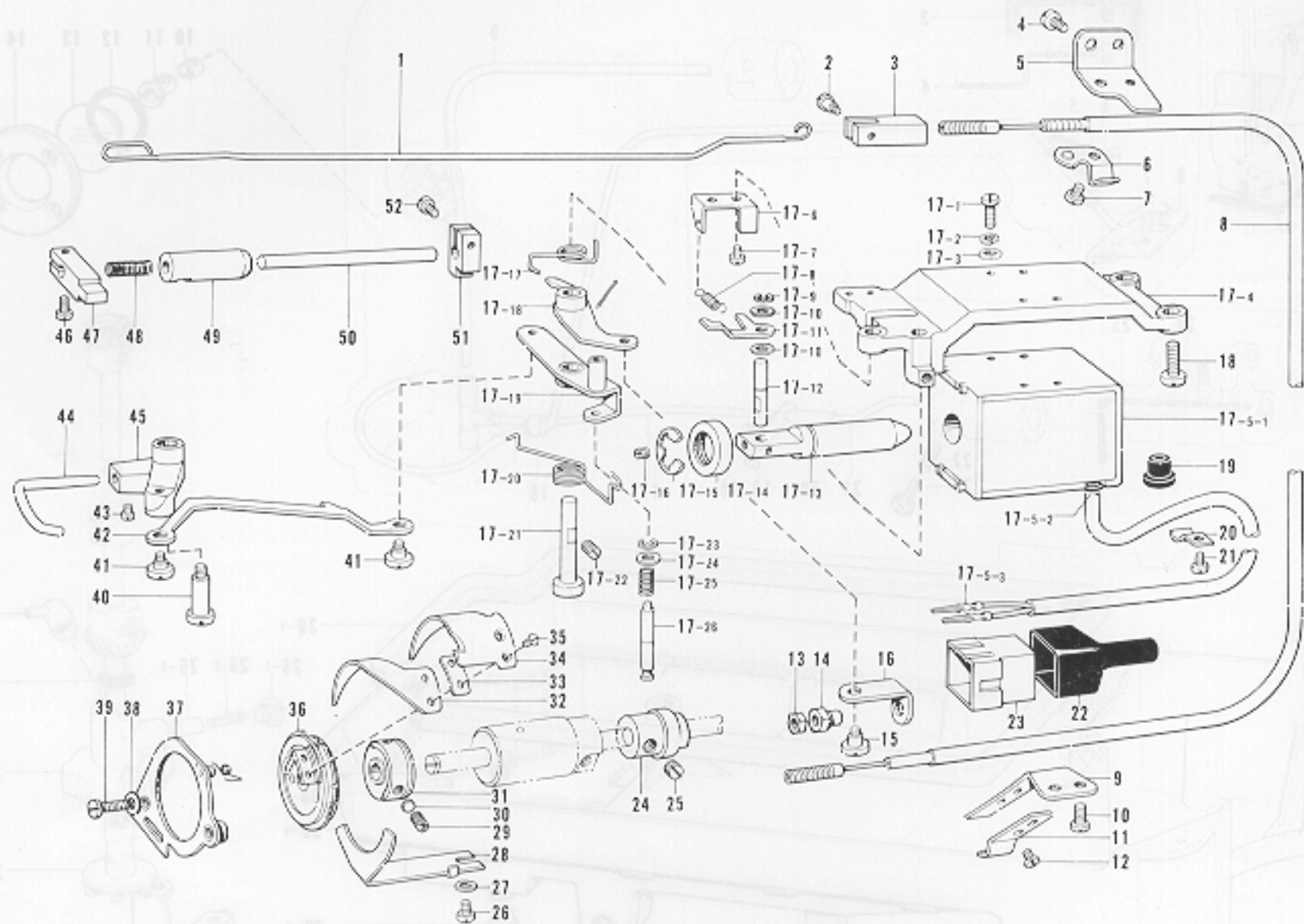
Ref. No.	Name of Parts	Q'ty	Parts No.	Assembly No.	Ref. No.	Name of Parts	Q'ty	Parts No.	Assembly No.
D-1	Presser Foot	1			D-19	Screw	3	145478-0-01	
D-2	Screw	1	001671-0-14		D-20	Presser Bar Lifter Lever Shaft	1	145580-0-01	
D-3	Presser Bar Bushing	1	145472-0-01		D-21	Stop Ring	2	048040-3-42	
D-4-1	Presser Bar Clamp	1		D-4 Presser Bar Clamp Assembly 181919-0-01	D-22	Spring	1		
D-4-2	Screw	1	013760-6-10		D-23	Washer	2	109763-0-02	
D-5	Presser Bar	1	111466-0-01		D-24	Tension Release Stud	1	145691-0-01	
D-6	Presser Spring Washer	1	140407-0-01		D-25	Knee Lifter Connector	1	145476-0-01	
D-7	Presser Spring	1	147514-0-01		D-26	Screw	1	145480-0-01	
D-8	Presser Spring Bar	1	141208-0-01		D-27	Knee Lifter Lever	1	145479-0-01	
D-9	Screw	1	141207-0-01		D-28	Knee Lifter Bar	1	145481-0-01	
D-10	Presser Bar Lifter	1	145482-0-01		D-29	Knee Lifter Complying Bar	1	145573-0-00	
D-11	Screw	1	013710-5-12		D-30-1	Knee Lifter Joint	1	146039-0-01	D-30 Knee Lifter Assembly
D-12	Packing	1	081001-6-70		D-30-2	Bolt	1	017762-0-13	
D-13	Presser Bar Lifter Crank	1	145483-0-01		D-30-3	Knee Lifter Bar	1	104619-0-02	
D-14	Screw	1	100128-0-02		D-30-4	Bolt	1	100463-0-01	
D-15	O Ring	1	081003-0-70		D-30-5	Knee Lifter Plate Stopper	1	114967-0-01	
D-16	Presser Bar Lifter Lever Shaft	1	145474-0-01		D-30-6	Bolt	1	110087-0-01	
D-17-1	Tension Release Bar Hook	1		D-17 Tension Releaser	D-30-7	Knee Lifter Plate	1	114966-0-01	
D-17-2	Tension Release Plate	1			D-30-8	Knee Lifter Cover	1	140503-0-01	
D-18	Stop Ring	1	048030-3-42						

# E. Lubrication



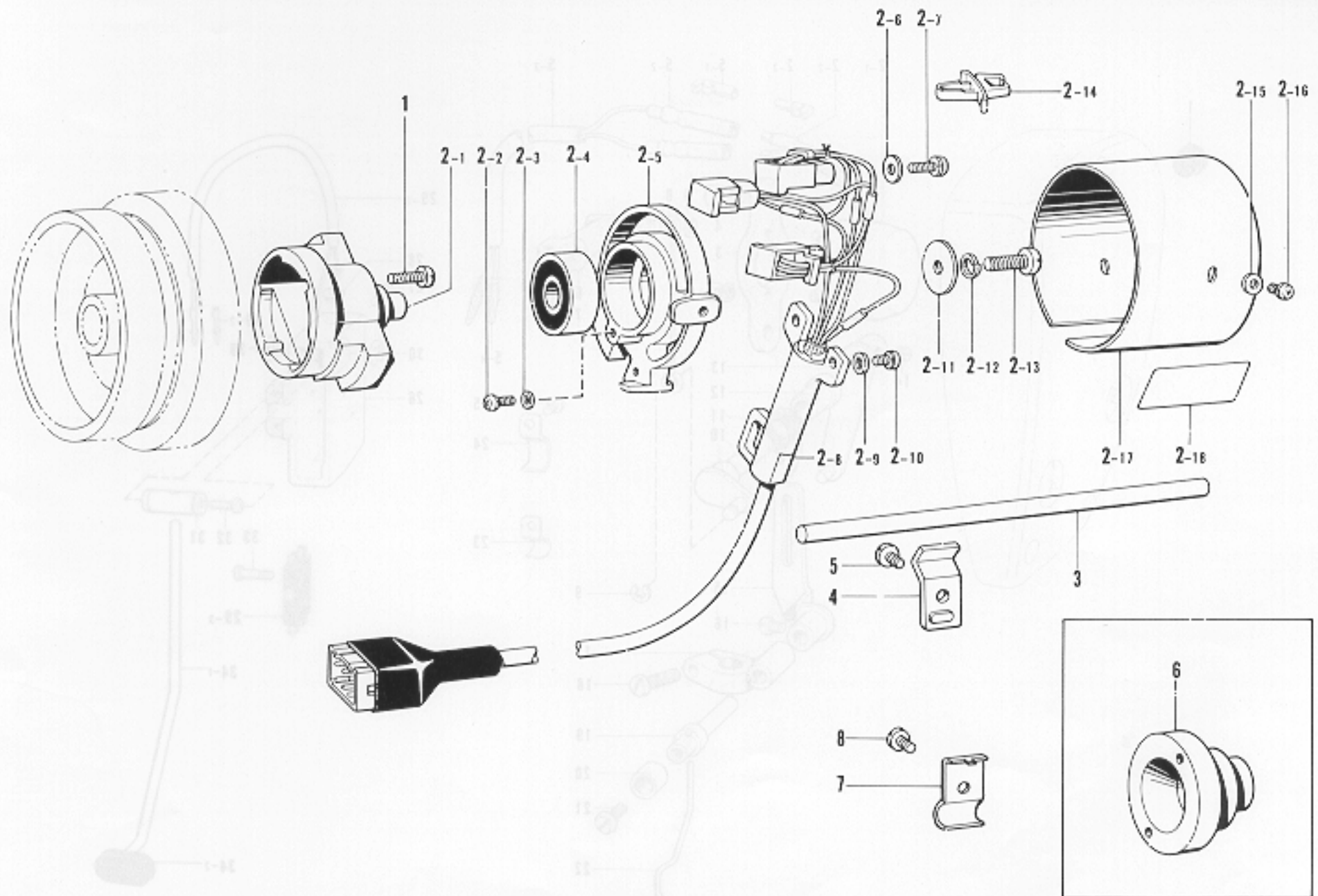
Ref. No.	Name of Parts	Q'ty	Parts No.	Assembly No.	Ref. No.	Name of Parts	Q'ty	Parts No.	Assembly No.
E- 1-1	Oil Stopper Plate	1		E-1 Oil Stopper Plate Assembly 181639-0-01	E-26-1	Oil Draining Screw	1	112467-0-02	E-26 Pump Body Assembly 181476-1-01
E- 1-2	Wick	1	109405-0-01		E-26-2	Spring	1	144876-0-01	
E- 2	Screw	2	009670-5-12	E-26-3	Plunger	1	144875-0-01		
E- 3	Wick	1	108804-0-01	E-26-4	Joint	1	144878-0-01		
E- 4	Wick	1	109405-0-01	E-26-5	Pump Body	1	148848-0-01		
E- 5	Tube Holder	1	145547-0-01	E-26-6	Pump Propeller	1	148849-0-01		
E- 6	Screw	1	009670-5-13	E-26-7	Pump	1	144869-0-01		
E- 7	Felt Support	1	145737-0-01	E-26-8	Spring	2	144874-0-01		
E- 8	Tube	1	145543-0-01	E-26-9	Screw	4	009670-8-12		
E- 9	Oil Tube Upper	1	147496-0-00	E-27	Oil Stopper	1	146196-0-01		
E-10	Tube Holder Cap	1	146314-0-00	E-28	Pump Filter	1	144872-0-01		
E-11	Tube Holder	1	145529-0-00	E-29	Screw	3	009680-7-13		
E-12	O Ring	1	081014-6-70	E-30-1	Packing	1	146040-0-01	E-30 Oil Pan Assembly	
E-13	Oil Gauge Window	1	104547-0-01	E-30-2	Screw	1	140518-0-01		
E-14	Oil Gauge Flange	1	104546-0-01	E-30-3	O Ring	1	081007-0-70		
E-15	Screw	1	102538-0-02	E-30-4	Oil Pan	1			
E-15	Tube	1	146253-0-00	E-30-5	Oil Cap	1	140480-0-01		
E-17	Oil Tube D Assembly	1	149144-0-01	E-30-6	Knee Lifter Shaft Bushing	2	149578-0-00		
E-18	Tube Holder	1	149146-0-01	E-30-7	Knee Lifter	1	146037-0-01		
E-19	Screw	1	009680-6-12	E-30-8	Nut	2	100022-0-04		
E-20	Tube Joint	1	149998-0-00	E-30-9	Screw	2	104885-0-01		
E-21	Oil Tube Lower	1	149999-0-00	E-30-10	Bolt	1	146367-0-01		
E-22	Spring	1	116794-0-01	E-30-11	Spring	1			
E-23	Screw	1	145534-0-01	E-30-12	Knee Lifter Shaft	1			
E-24	Vinyl Tube	1	150340-0-00	E-30-13	Stop Ring	1	145293-0-01		
E-25	Wick	1	108801-0-01	E-30-14	Spring	2			

# F. Thread Trimmer and Tension Releaser



Ref. No.	Name of Parts	Q'ty	Parts No.	Assembly No.	Ref. No.	Name of Parts	Q'ty	Parts No.	Assembly No.
F-1	Tension Release Bar	1	149138-0-01		F-17-23	Stop Ring	1	048030-3-42	F-17 Solenoid Bracket Assembly
F-2	Stud Screw	1	149137-0-01		F-17-24	Washer	1	025040-2-32	
F-3	Tension Release Wire Joint	1	149136-0-01		F-17-25	Lever Stud Spring	1	150352-0-00	
F-4	Screw	2	009670-6-12		F-17-26	Bobbin Finger Lever Stud	1	149724-0-01	
F-5	Tension Release Wire Holder U	1	149134-0-01		F-18	Screw	3	009781-4-12	
F-6	Tension Release Wire Presser U	1	149135-1-01		F-19	Bushing	1	146080-0-00	
F-7	Screw	1	001670-6-12		F-20	Supporter	1	140647-0-01	
F-8	Tension Release Wire	1	149130-1-01		F-21	Screw	1	009670-6-12	
F-9	Tension Release Wire Holder D	1	149132-0-01		F-22	Connector Cap	1		
F-10	Screw	2	009680-6-12		F-23	Nylon Connector	1		
F-11	Tension Release Wire Presser D	1	149133-1-01		F-24	Bobbin Finger Driving Cam	1	149725-0-01	
F-12	Screw	1	001670-6-12		F-25	Screw	2	191706-0-01	
F-13	Nut	1	021670-2-03		F-26	Screw	1	009680-7-13	
F-14	Wire Sleeve	1	149775-0-01		F-27	Washer	1	025680-1-33	
F-15	Stud Screw	1	149127-0-01		F-28	Cover	1	149128-0-01	
F-16	Tension Release Link	1	149131-0-01		F-29	Screw	3	014680-6-22	
F-17-1	Screw	4	007401-0-12		F-30	Washer	3	147697-0-01	
F-17-2	Washer	4	028040-2-43		F-31	Thread Trimmer Clutch	1	149709-0-01	
F-17-3	Washer	4	025040-1-33		F-32	Lower Thread Finger	1	145610-1-01	
F-17-4	Thread Trimming Solenoid Bracket	1	149110-0-01		F-33	Spacer	1		
F-17-5-1	Thread Trimming Solenoid	1		F-17-5 Thread Trimming Solenoid Assembly	F-34	Movable Knife	1	145608-0-01	
F-17-5-2	Bushing	1			F-35	Screw	2	141542-0-01	
F-17-5-3	Terminal Pin	2			F-36	Movable Knife Holder Assembly	1	149710-0-01	
F-17-6	Thread Trimming Claw Stopper	1	149120-0-01		F-37	Movable Knife Holder Plate Assembly	1	149712-0-01	
F-17-7	Screw	2	100242-0-03		F-38	Washer	2	100645-0-03	
F-17-8	Thread Trimming Claw Spring	1	149121-0-01		F-39	Screw	2	009681-2-12	
F-17-9	Stop Ring	1	048030-3-40		F-40	Bobbin Finger Crank Stud	1	149124-0-01	
F-17-10	Washer	2	100645-0-03		F-41	Stud Screw	2	149127-0-01	
F-17-11	Thread Trimming Claw	1	149114-0-01		F-42	Bobbin Finger Connecting Rod	1	149726-0-01	
F-17-12	Plunger Pin	1	149113-0-01		F-43	Screw	2	144458-0-01	
F-17-13	Plunger	1	149111-0-01	F-17 Solenoid Bracket Assembly	F-44	Bobbin Finger	1	149125-0-01	
F-17-14	Plunger Stopper	1	149112-0-01		F-45	Bobbin Finger Crank	1	149123-0-01	
F-17-15	Stop Ring	1	048090-3-42		F-46	Screw	1	009660-7-12	
F-17-16	Screw	1	013679-4-12		F-47	Stopper	1	145617-0-01	
F-17-17	Thread Trimming Lever Spring	1	149115-0-01		F-48	Spring	1	145621-0-01	
F-17-18	Thread Trimming Lever	1	149722-0-01		F-49	Thread Trimming Shaft Bushing	1	149105-0-00	
F-17-19	Bobbin Finger Lever	1	149723-0-01		F-50	Thread Trimming Shaft	1	149104-0-01	
F-17-20	Bobbin Finger Lever Spring	1	149118-0-01		F-51	Thread Trimming Claw Block	1	149106-0-01	
F-17-21	Thread Trimming Lever Stud	1	149119-0-01		F-52	Screw	1	009660-7-12	
F-17-22	Screw	1	151602-0-02						

# G. Synchronizer

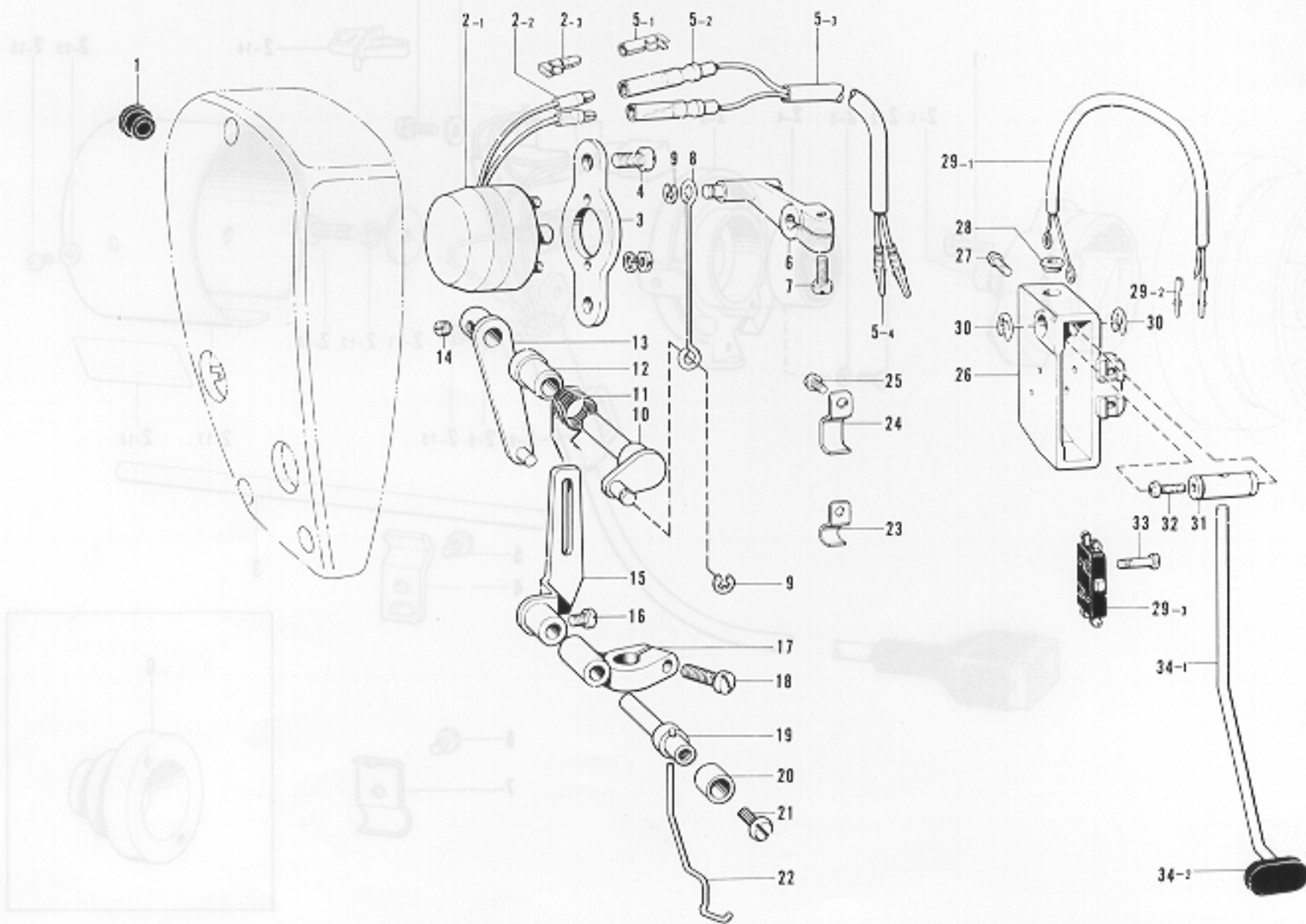


Ref. No.	Name of Parts	Q'ty	Parts No.	Assembly No.	Ref. No.	Name of Parts	Q'ty	Parts No.	Assembly No.
G-1	Screw	2	009711-4-12		G-2-13	Screw	1	216880-0-01	G-2 Synchronizer Assembly
G-2- 1	Magnet Stud	1			G-2-14	Cord Holder	1		
G-2- 2	Screw	1	215083-0-01		G-2-15	Washer	2	025040-1-35	
G-2- 3	Washer	1	025030-3-35		G-2-16	Screw	2	215080-0-01	
G-2- 4	Bearing	1			G-2-17	Synchronizer Cover	1		
G-2- 5	Hole IC Holder	1			G-2-18	Lavel	1		
G-2- 6	Washer	3	025040-3-35	G-2 Synchronizer Assembly	G-3	Synchronizer Holder Bar	1	218944-0-01	
G-2- 7	Screw	3	217093-0-01		G-4	Holder	1	216332-0-01	
G-2- 8	Hole IC with Cord	1	218953-0-01		G-5	Screw	1	009781-4-12	
G-2- 9	Washer	2	025040-1-35		G-6	Slip Ring Support	1		
G-2-10	Screw	2	215080-0-01		G-7	Cord Stopper	1	145597-0-01	
G-2-11	Washer	1	025060-3-35		G-8	Screw	1	009680-5-12	
G-2-12	Washer	1	028060-2-34						

\* Parts of H-1-H-25 are Thread Wiper (-200, -400, -500)  
 \* Parts of H-26-H-34 are Quick Back Switch Mechanism (-400, -500)



# H. Thread Wiper (-200, -400, -500) · Quick Back Switch Mechanism (-400, -500)

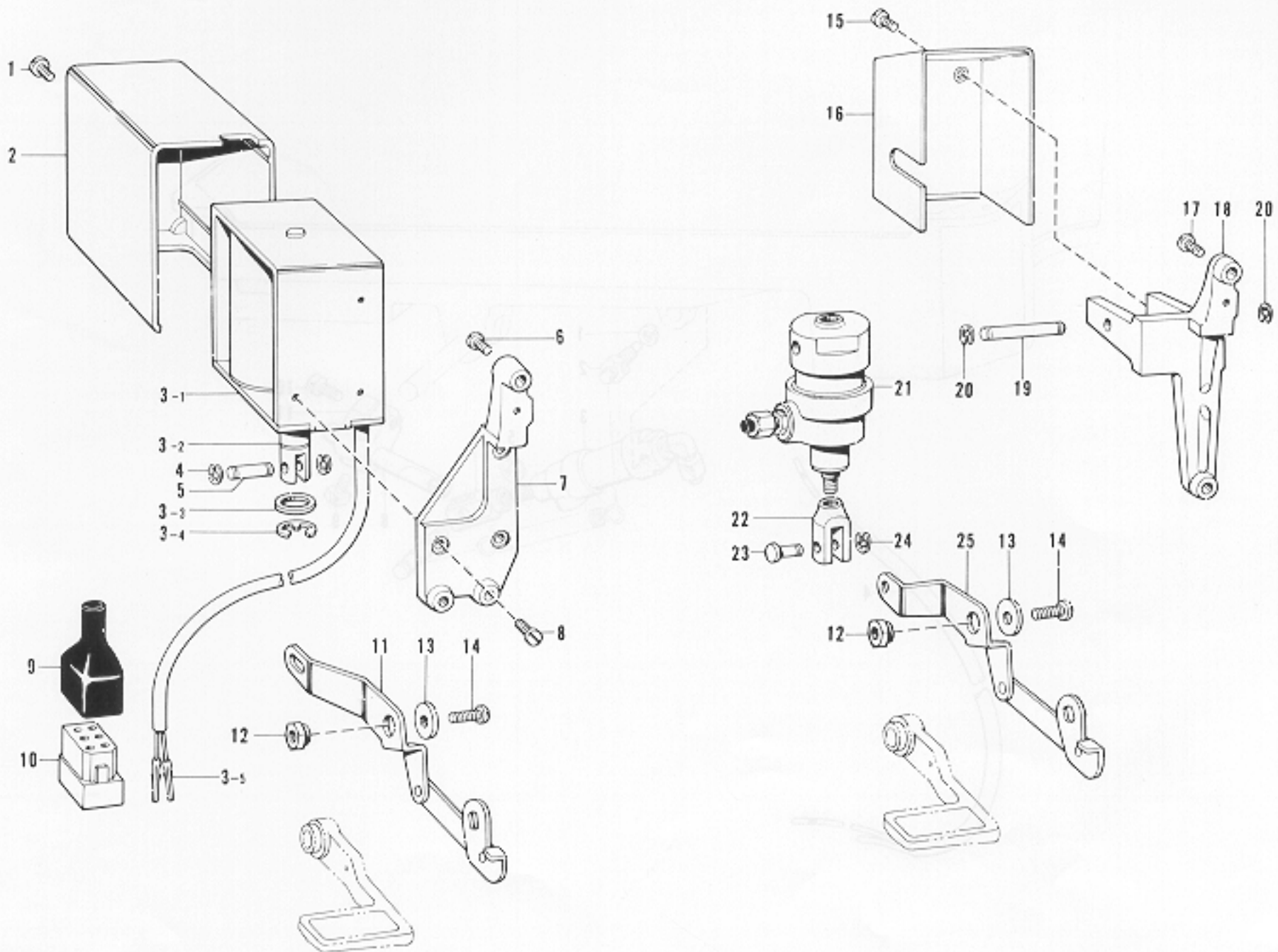


Ref. No.	Name of Parts	Q'ty	Parts No.	Assembly No.	Ref. No.	Name of Parts	Q'ty	Parts No.	Assembly No.
H- 1	Bushing	1	146080-0-00		H-17	Thread Wiper Supporter	1	146093-0-01	
H- 2-1	Rotary Solenoid	1		H-2 Thread Wiper Solenoid 146082-0-00	H-18	Screw	1	009681-4-14	
H- 2-2	Insulated Cover	2			H-19	Thread Wiper Stud	1	146092-0-01	
H- 2-3	Plug	2	146084-0-00		H-20	Thread Wiper Stud Collar	1	146288-0-01	
H- 3	Solenoid Set Plate	1	146081-0-01		H-21	Screw	1	001670-5-14	
H- 4	Screw	2	009680-8-12		H-22	Thread Wiper	1	146094-0-01	
H- 5-1	Insulated Sleeve	2		H-5 Cord	H-23	Supporter	3		
H- 5-2	Receptacle	2	146097-0-00		H-24	Tube Holder	3		
H- 5-3	Thread Wiper Cord	1			H-25	Screw	3	009670-6-12	
H- 5-4	Terminal Pin	2			H-26	Reverse Switch Case	1	146120-0-01	
H- 6	Solenoid Link	1	146086-0-01		H-27	Screw	2	009671-0-12	
H- 7	Screw	1	009671-0-13		H-28	Bushing	1	146080-0-00	
H- 8	Wire Link	1	146087-0-01		H-29-1	Reverse Switch Cord	1		H-29 Switch
H- 9	Stop Ring	2	048025-3-42		H-29-2	Terminal Pin	2		
H-10	Thread Wiper Crank	1	146088-0-01		H-29-3	Micro Switch	1	140643-0-00	
H-11	Spring	1	146089-0-01		H-30	Stop Ring	2	048080-3-42	
H-12	Bushing	1	146079-0-01		H-31	Actuator Pin	1	146125-0-01	
H-13	Thread Wiper Lever	1	146090-0-01		H-32	Screw	1	009681-4-14	
H-14	Screw	2	102716-0-02		H-33	Screw	2	146124-0-01	
H-15	Grooved Link	1	146091-0-01		H-34-1	Actuator	1	146127-0-01	H-34 Reverse Finger 146124-0-01
H-16	Screw	1	111443-0-01		H-34-2	Actuator	1	146128-0-00	

\* Parts of H-1~H-25 are Thread Wiper (-200, -400, -500).

\* Parts of H-26~H-34 are Quick Back Switch Mechanism (-400, -500).

J. Quick Back Mechanism (-400, -500)

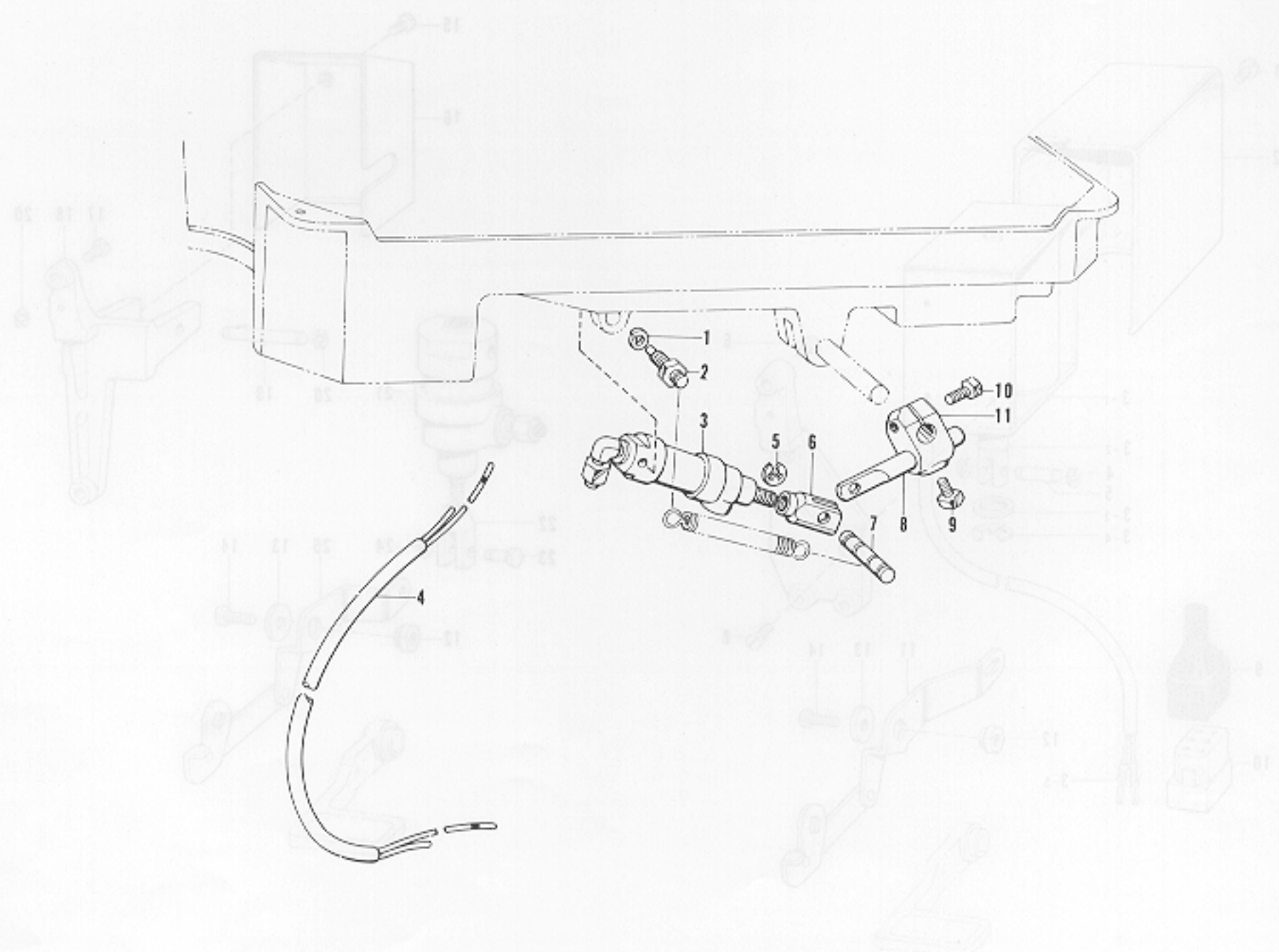


Ref. No.	Name of Parts	Q'ty	Parts No.	Assembly No.	Ref. No.	Name of Parts	Q'ty	Parts No.	Assembly No.
J- 1	Screw	1	007506-6-02		J-12	Solenoid Lever Stud	1	149094-0-01	
J- 2	Solenoid Cover	1	146105-0-00		J-13	Washer	1	149095-0-01	
J- 3-1	Solenoid	1		J-3 Reverse Solenoid	J-14	Screw	1	009781-4-12	
J- 3-2	Plunger	1			J-15	Screw	2	009670-5-13	
J- 3-3	Rubber Stopper	1	146104-0-00		J-16	Cover	1	146156-0-01	
J- 3-4	Stop Ring	1	146103-0-01		J-17	Screw	2	009781-8-12	
J- 3-5	Terminal Pin	2			J-18	Cylinder Supporter	1	149573-1-01	
J- 4	Stop Ring	2	048040-3-42		J-19	Cylinder Supporter Shaft	1	146148-0-01	
J- 5	Pin	1	147754-0-01		J-20	Stop Ring	2	048040-3-42	
J- 6	Screw	3	009781-8-12		J-21	Reverse Cylinder	1	146149-0-01	
J- 7	Reverse Solenoid Bracket	1	149140-1-01		J-22	Piston Rod Joint	1	140627-0-01	
J- 8	Screw	3	007500-8-12		J-23	Pin	1	146153-0-01	
J- 9	Connector Cap	1			J-24	Stop Ring	1	048040-3-42	
J-10	6P Connector	1			J-25	Reverse Cylinder Lever Assembly	1	149571-0-01	
J-11	Solenoid Lever Assembly	1	149089-0-01						

\* Parts J-1~J-14 are for -400 type specifications, and parts J-12~J-25 are for -500 type specifications.

# K. Presser Lifter Mechanism (-500)

J. Quick Back Mechanism (-400, -500)

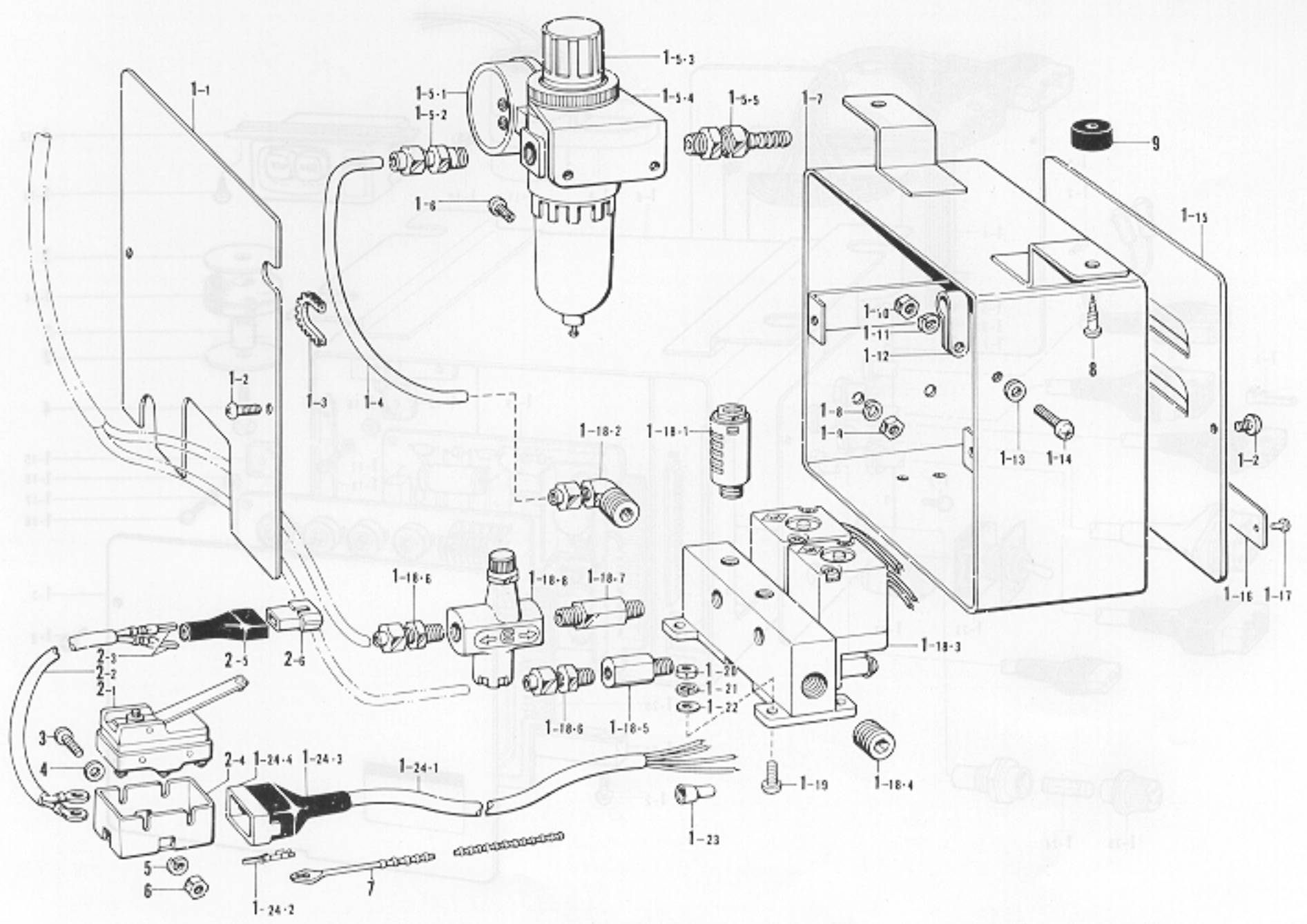


Ref. No.	Name of Parts	Q'ty	Parts No.	Assembly No.	Ref. No.	Name of Parts	Q'ty	Parts No.	Assembly No.
K- 1	Washer	2	028060-2-40		K- 7	Pin	1	146986-0-01	
K- 2	Screw	2	147141-0-01		K- 8	Piston Drive Link	1	140668-0-01	
K- 3	Presser Foot Cylinder	1	146157-0-01		K- 9	Bolt	1	100463-0-01	
K- 4	Air Tube Assembly	1	149548-0-01		K-10	Bolt	1	017762-0-13	
K- 5	Stop Ring	2	048040-3-42		K-11	Knee Lifter Joint	1	146039-0-01	
K- 6	Piston Rod Joint	1	140627-0-01						

Parts 1-1-1-14 are for -400 type specifications, and parts 1-12-1-12 are for -500 type specifications.

L. Valve Box (-500)

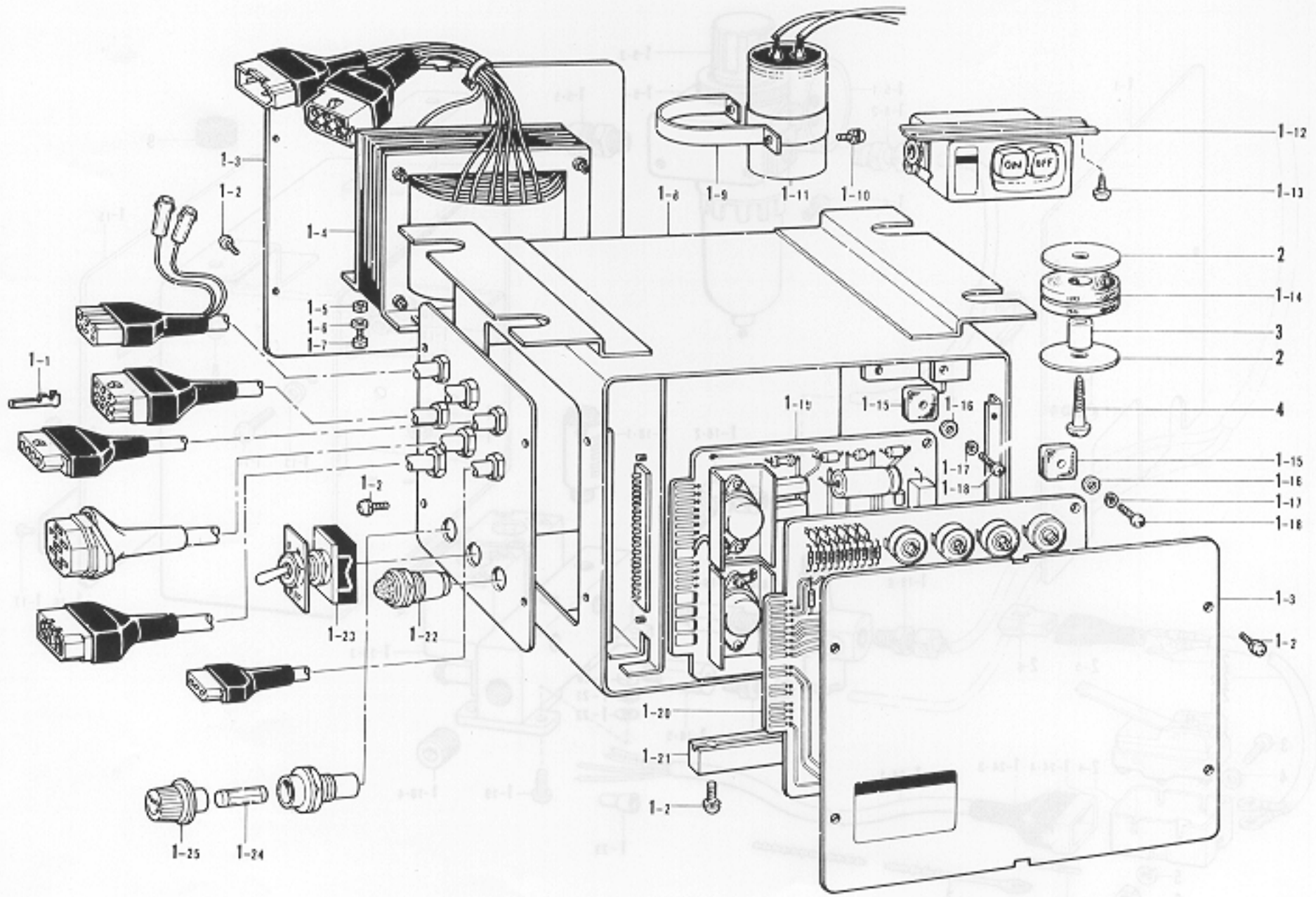
M Control Box



Ref. No.	Name of Parts	Q'ty	Parts No.	Assembly No.	Ref. No.	Name of Parts	Q'ty	Parts No.	Assembly No.
L-1- 1	Back Cover	1			L-1-18-6	1/8" Connector	2	140543-0-00	L-1-18
L-1- 2	Screw	4	008490-5-64		L-1-18-7	Speed Control Connector	1	142037-0-00	Solenoid
L-1- 3	Nylon Bushing	1	146171-0-00		L-1-18-8	Speed Controller	1	142038-0-01	Valve Assembly
L-1- 4	Air Tube	1	140540-9-00		L-1-19	Screw	4	002401-2-03	149543-0-01
L-1- 5-1	Presser Gauge	1			L-1-20	Nut	4	021400-1-03	
L-1- 5-2	Connector	1	142349-0-00	L-1-5	L-1-21	Washer	4	028040-2-43	
L-1- 5-3	Plastic Bottol	1	143960-1-01	Air Unit	L-1-22	Washer	4	025040-1-33	
L-1- 5-4	Air Unit Holder Plate	1	143962-0-01	Assembly	L-1-23	Connector	4	206755-0-00	
L-1- 5-5	Air Tube Connector	1	140678-0-00	143959-1-03	L-1-24-1	Valve Cord	1		L-1-24
L-1- 6	Screw	2	002501-0-64		L-1-24-2	Terminal Pir.	4	143549-0-00	Valve Cord
L-1- 7	Valve Case	1			L-1-24-3	Connector Cap	1	145596-0-01	Assembly
L-1- 8	Washer	2	028050-2-43		L-1-24-4	6P Connector	1	146118-0-00	149545-0-01
L-1- 9	Nut	2	021500-1-63		L-2-1	Micro Switch	1	140948-0-01	
L-1-10	Nut	1	021300-1-03	L-1	L-2-2	Presser Foot Lifter Cord	1		L-2
L-1-11	Washer	1	028030-2-43	Air Control	L-2-3	Terminal Pin	2	143549-0-00	Presser Foot
L-1-12	Cord Holder	1	149547-0-00	Box	L-2-4	Cover	1	140950-0-00	Lifter Cord
L-1-13	Washer	1	025030-1-33		L-2-5	Connector Cap	1	143489-0-01	Assembly
L-1-14	Screw	1	002301-0-03		L-2-6	Nylon Connector	1	143488-0-01	
L-1-15	Rear Cover	1			L-3	Screw	2		
L-1-16	Name Plate	1			L-4	Washer	2		
L-1-17	Rivet	2			L-5	Washer	2		
L-1-18-1	Silencer	2	140682-0-01		L-6	Nut	2		
L-1-18-2	1/4" Elbow	1	140538-0-00	L-1-18	L-7	Bead Band	1		
L-1-18-3	Solenoid Valve	1	149544-0-01	Solenoid	L-8	Screw	2		
L-1-18-4	1/4" Cap	1	140542-0-01	Valve Assembly	L-9	Cushion Rubber	2		
L-1-18-5	Valve Connector	2	149539-0-00	149543-0-01					

# M. Control Box

L. Valve Box (500)

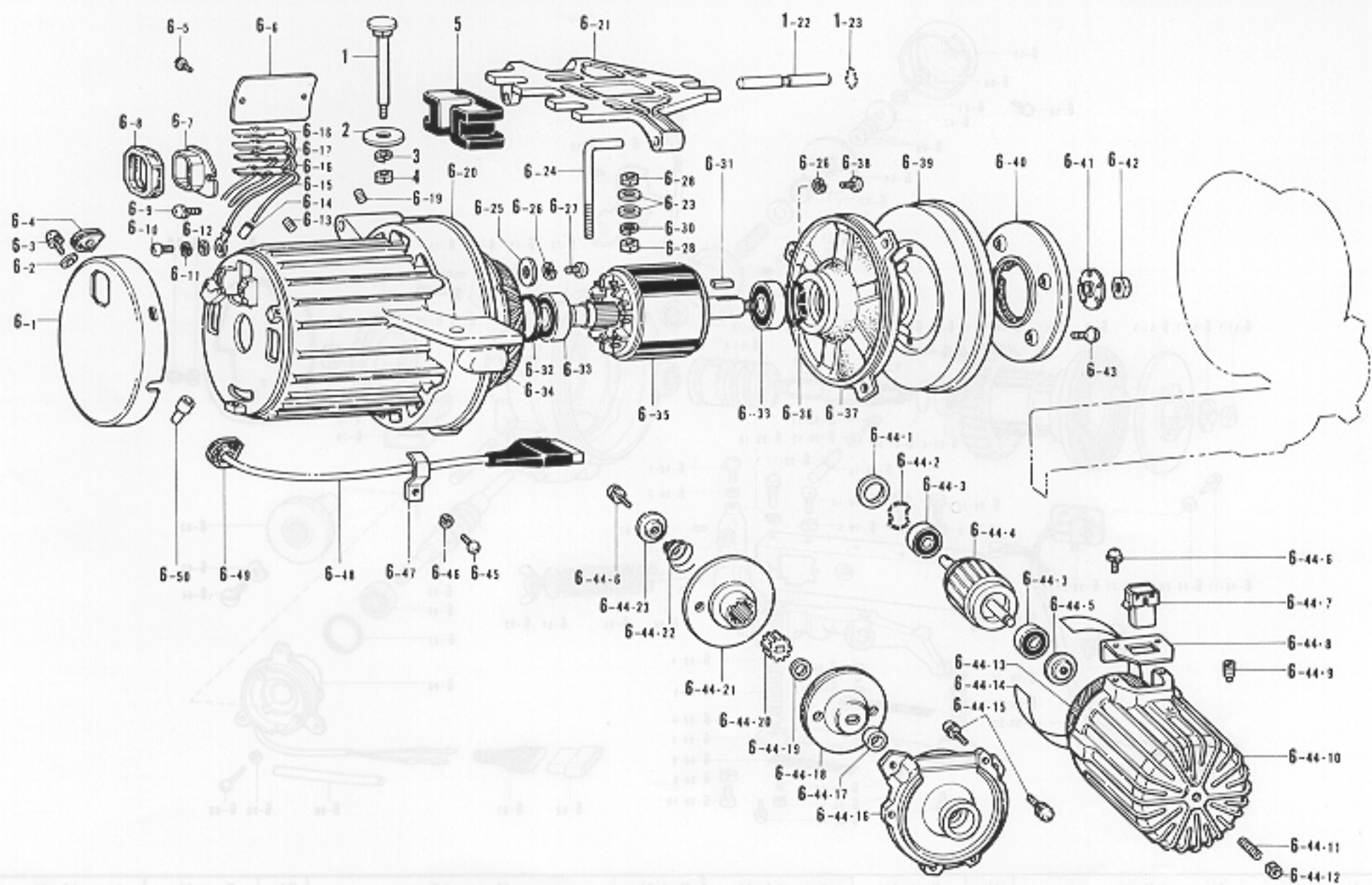


Ref. No.	Name of Parts	Q'ty	Parts No.	Assembly No.	Ref. No.	Name of Parts	Q'ty	Parts No.	Assembly No.
M-1- 1	Terminal Pin	27	216373-0-01	M-1 Control Box Assembly	M-1-15	Insulator Rubber	2	216351-0-00	M-1 Control Box Assembly
M-1- 2	Screw	16	215080-0-01		M-1-16	Washer	4	025030-3-35	
M-1- 3	Control Box Front Cover Plate	2	218819-0-01		M-1-17	Washer	2	028030-2-43	
M-1- 4	Transformer	1			M-1-18	Screw	4	002300-8-05	
M-1- 5	Nut	4	218823-0-01		M-1-19	Printed Circuit Board	1		
M-1- 6	Washer	4	025040-2-35		M-1-20	Printed Circuit Board	1		
M-1- 7	Screw	4	216870-0-01		M-1-21	Mounting Rail	2	218821-0-01	
M-1- 8	Control Box	1			M-1-22	Pilot Lamp	1		
M-1- 9	Condenser Set Plate	1			M-1-23	Pilot Lamp Switch	1	216905-0-01	
M-1-10	Screw	2			M-1-24	5A Fuse	1	215822-0-00	
M-1-11	Condenser	1			M-1-25	Fuse Holder	1	215387-0-01	
M-1-12	3P Push Button Switch	1	213794-0-01		M-2	Washer	8	214344-0-01	
M-1-13	Screw	2	031451-6-03		M-3	Collar	4	216346-0-01	
M-1-14	Cushion Rubber	4	216345-0-00		M-4	Screw	4	031624-0-05	

1-1	Terminal Pin	27	216373-0-01	1-15	Insulator Rubber	2	216351-0-00
1-2	Screw	16	215080-0-01	1-16	Washer	4	025030-3-35
1-3	Control Box Front Cover Plate	2	218819-0-01	1-17	Washer	2	028030-2-43
1-4	Transformer	1		1-18	Screw	4	002300-8-05
1-5	Nut	4	218823-0-01	1-19	Printed Circuit Board	1	
1-6	Washer	4	025040-2-35	1-20	Printed Circuit Board	1	
1-7	Screw	4	216870-0-01	1-21	Mounting Rail	2	218821-0-01
1-8	Control Box	1		1-22	Pilot Lamp	1	
1-9	Condenser Set Plate	1		1-23	Pilot Lamp Switch	1	216905-0-01
1-10	Screw	2		1-24	5A Fuse	1	215822-0-00
1-11	Condenser	1		1-25	Fuse Holder	1	215387-0-01
1-12	3P Push Button Switch	1	213794-0-01	M-2	Washer	8	214344-0-01
1-13	Screw	2	031451-6-03	M-3	Collar	4	216346-0-01
1-14	Cushion Rubber	4	216345-0-00	M-4	Screw	4	031624-0-05

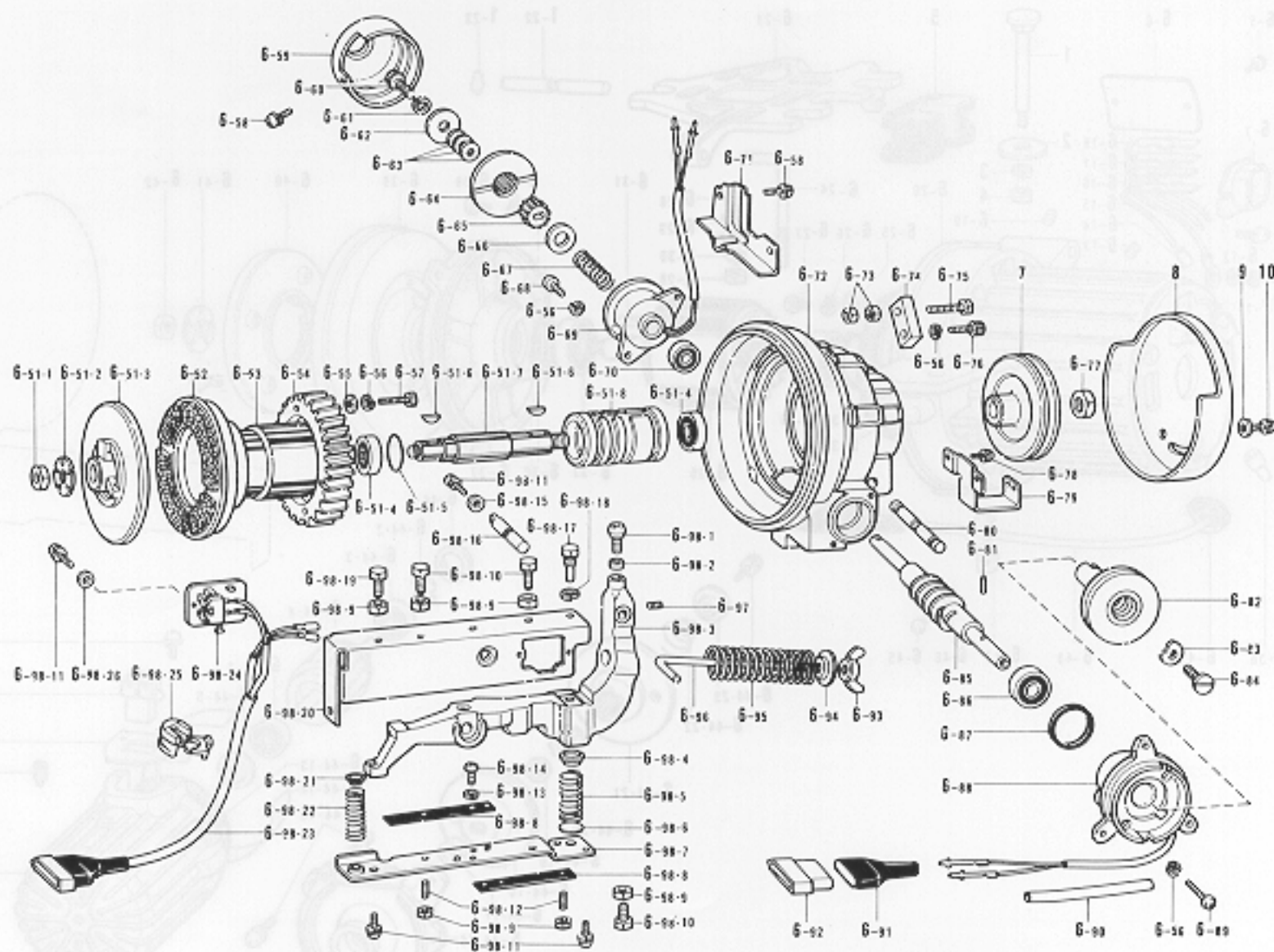
# N. Motor (Part 1)

(Part 1 of 2)



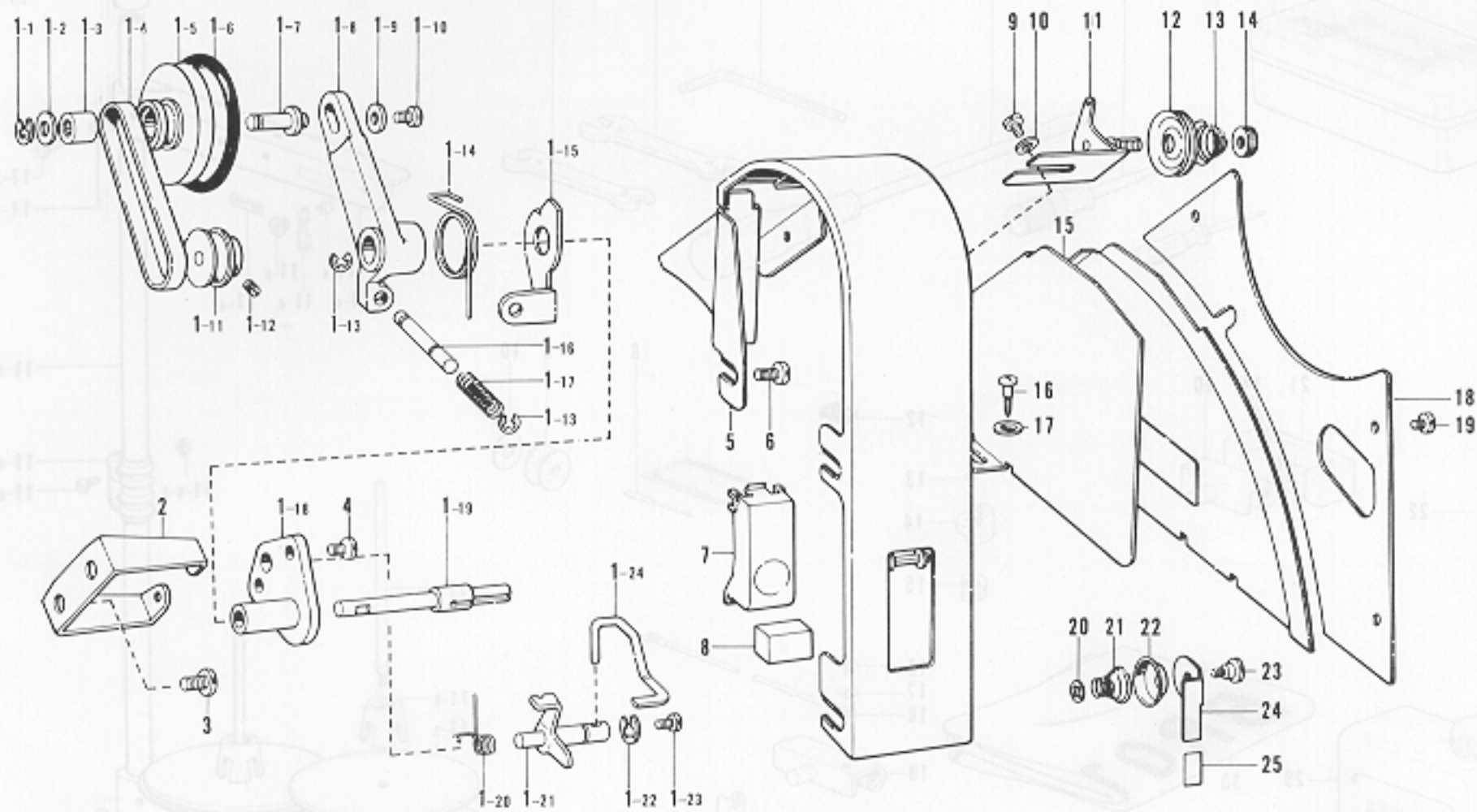
Ref. No.	Name of Parts	Q'ty	Parts No.	Assembly No.	Ref. No.	Name of Parts	Q'ty	Parts No.	Assembly No.
N-1	Bolt	3	210973-0-01		N-6-35	Rotor	1		
N-2	Washer	3	213650-0-01		N-6-36	Washer	1	206156-0-01	
N-3	Washer	3	028080-2-43		N-6-37	Bracket	1	218871-0-01	
N-4	Nut	3	021080-1-06		N-6-38	Screw	3	002501-6-05	
N-5	Vibration Absorbing Rubber	3	213646-0-01		N-6-39	Fly Wheel	1		
N-6-1	Frame Cover	1	218863-0-01		N-6-40	Clutch Lining #4	1	218873-0-00	
N-6-2	Washer	3	025050-2-35		N-6-41	Washer	1	210941-0-02	
N-6-3	Screw	3	211528-0-01		N-6-42	Nut	1	210942-0-02	
N-6-4	Rubber Pad #72	1	218865-0-01		N-6-43	Screw	4	214897-0-01	
N-6-5	Pin	2	200084-0-02		N-6-44-1	Washer	2	218913-0-01	
N-6-6	Model Plate	1			N-6-44-2	Washer	3	218870-0-01	
N-6-7	7P Socket	1	213748-0-01		N-6-44-3	Bearing 608 VV	2	072060-8-60	
N-6-8	7P Socket Cover 1	1	218862-0-01		N-6-44-4	Roter	1		
N-6-9	Screw	2	008400-8-06		N-6-44-5	Roter Push Plate	1	218910-0-00	
N-6-10	Screw	1	002401-0-63		N-6-44-6	Screw	3	215080-0-01	
N-6-11	Washer	1	028040-2-43		N-6-44-7	3P Plug	1	216299-0-01	
N-6-12	Nut	1	025040-1-73		N-6-44-8	Plug Set Plate	1	216300-0-01	
N-6-13	Screw	1	013080-8-13		N-6-44-9	Screw	1	216286-0-01	
N-6-14	Vinyl Cap for Lead Wire	2	218951-0-01		N-6-44-10	Sub Motor Frame #55	1	218911-0-01	
N-6-15	Lead Wire (White)		218861-0-01		N-6-44-11	Screw	1	012061-8-22	
N-6-16	Lead Wire for Earth	1			N-6-44-12	Nut	1	021060-3-05	N-6-44 Sub Motor Assembly
N-6-17	Lead Wire (Red)	1	218861-0-02	N-6 Motor Assembly	N-6-44-13	Stator	1		
N-6-18	Lead Wire (Black)	1	218861-0-03		N-6-44-14	Insulator Paper	2	216284-0-00	
N-6-19	Screw	1	011060-6-13		N-6-44-15	Screw	3	211528-0-01	
N-6-20	Frame #54	1	218831-0-01		N-6-44-16	Bracket	1	218912-0-00	
N-6-21	Base	1	218874-0-01		N-6-44-17	Collar	1	218922-0-01	
N-6-22	Pin	1	218875-0-01		N-6-44-18	Clutch Plate	1	218916-0-01	
N-6-23	Washer	1	213765-0-01		N-6-44-19	Washer	1	218921-0-01	
N-6-24	Bolt Adjusting Rod	1	210965-0-01		N-6-44-20	Selation	1	217280-0-01	
N-6-25	Washer	3	213752-0-01		N-6-44-21	Round Plate	1	218918-0-01	
N-6-26	Spring Washer	6	028050-2-43		N-6-44-22	Spring	1	218919-0-01	
N-6-27	Screw	3	218905-0-01		N-6-44-23	Washer	1	218920-0-00	
N-6-28	Nut	2	021100-2-06		N-6-45	Screw	1	002500-8-06	
N-6-29	Washer	2	025100-2-36		N-6-46	Spring Washer	1	028050-2-43	
N-6-30	Washer	1	028100-2-43		N-6-47	Cord Holder	1	218866-0-01	
N-6-31	Key	1	210940-0-00		N-6-48	Plug for Sub Motor	1	218867-0-01	
N-6-32	Rubber Washer 708 X 35 X 46RU	1	210938-0-01		N-6-49	Rubber Pad #71	1	218864-0-01	
N-6-33	Bearing 6203 VV	2	072620-3-60		N-6-50	Crimp Connector	3	217169-0-00	
N-6-34	Stator	1							

# N. Motor (Part 2)



Ref. No.	Name of Parts	Q'ty	Parts No.	Assembly No.	Ref. No.	Name of Parts	Q'ty	Parts No.	Assembly No.
N-6-51-1	Nut	1	210942-0-02	N-6-51 Clutch Plate #8 Assembly 218877-0-01	N-6-86	Bearing 6201 VV	1	072620-1-61	N-6-98 Clutch Lever #8 Assembly 218923-0-01
N-6-51-2	Washer	1	210941-0-02		N-6-87	Washer	1	216277-0-01	
N-6-51-3	Clutch Plate #6	1	213750-0-00		N-6-88	Clutch Solenoid	1	218903-0-01	
N-6-51-4	Bearing 620 VV	2	072620-2-60		N-6-89	Screw	2	002503-5-05	
N-6-51-5	Washer	1	210948-0-01		N-6-90	Vinyl Tube	1	216837-0-01	
N-6-51-6	Key	2	210421-0-00		N-6-91	Plug Cover	1	216248-0-01	
N-6-51-7	Clutch Shaft	1	218878-0-00		N-6-92	4P Plug	1	216247-0-01	
N-6-51-8	Clutch Shaft Supporter	1	218879-0-01		N-6-93	Nut	1	206337-0-02	
N-6-52	Brake Lining	1	218882-0-00	N-6-94	Spring Cap	1	213760-0-01		
N-6-53	Supporter for Clutch Shaft Supporter	1	290439-0-00	N-6-95	Spring	1	218929-0-01		
N-6-54	Gear 1/2	1	216219-0-00	N-6-96	Pedal Pressure Adjusting Screw	1	218928-0-01		
N-6-55	Washer	4	025050-1-35	N-6-97	Screw	1	014061-0-22		
N-6-56	Washer	9	028050-2-43	N-6-98-1	Bail Screw	1	216225-0-01		
N-6-57	Screw	4	018502-5-22	N-6-98-2	Nut	1	218921-0-01		
N-6-58	Screw	4	215080-0-01	N-6-98-3	Clutch Lever	1	218924-0-01		
N-6-59	Brake Cover	1	218902-0-01	N-6-98-4	Spring Cap	1	216233-0-01		
N-6-60	Bolt	1	018401-4-22	N-6-98-5	Spring	1	218945-0-01		
N-6-61	Spring Washer	1	028040-2-43	N-6-98-6	Washer	1	216235-0-00		
N-6-62	Washer	1	218896-0-00	N-6-98-7	Clutch Lever Bottom Plate	1	218946-0-01		
N-6-63	Spacer	4	218860-0-01	N-6-98-8	Switch Presser Plate	2	216241-0-01		
N-6-64	Brake Disc	1	218895-0-01	N-6-98-9	Nut	6	021060-3-05		
N-6-65	Selation	1	217280-0-01	N-6-98-10	Bolt	3	213913-0-01		
N-6-66	Washer	1	218894-0-01	N-6-98-11	Screw	8	215080-0-01		
N-6-67	Spring	1	218893-0-01	N-6-98-12	Screw	2	012061-2-22		
N-6-68	Screw	2	002501-6-05	N-6-98-13	Spring Washer	2	028040-2-43		
N-6-69	Brake Solenoid	1	218915-0-01	N-6-98-14	Screw	2	002400-6-05		
N-6-70	Bearing 608 VV	1	072060-8-60	N-6-98-15	Washer	1	025040-3-35		
N-6-71	Cord Holder	1	218930-0-01	N-6-98-16	Pin	1	218926-0-01		
N-6-72	Bracket	1	218876-0-01	N-6-98-17	Bolt	1	216232-0-01		
N-6-73	Nut	2	021060-3-05	N-6-98-18	Washer	1	028060-2-43		
N-6-74	Space Adjusting Plate	1	218881-0-01	N-6-98-19	Bolt	1	214002-0-01		
N-6-75	Bolt	1	219405-0-01	N-6-98-20	Clutch Lever Cover	1	218925-0-01		
N-6-76	Bolt	1	018502-2-23	N-6-98-21	Spring Cap	1	218927-0-01		
N-6-77	Nut	1	210240-0-01	N-6-98-22	Spring	1	216230-0-01		
N-6-78	Screw	2	211528-0-01	N-6-98-23	Micro Key Cord	1	218947-0-01		
N-6-79	Belt Cover Set Plate	1	216380-0-01	N-6-98-24	Micro Switch	2	216236-0-01		
N-6-80	Pin	1	213757-0-02	N-6-98-25	Bushing	1	212544-0-01		
N-6-81	Spring Pin	1	218952-0-01	N-6-98-26	Washer	4	025040-1-35		
N-6-82	Clutch Plate #2	1	218885-0-01	N-7	Pulley	1			
N-6-83	Washer	1	218891-0-01	N-8	Belt Cover	1	215491-0-01		
N-6-84	Screw	1	218892-0-01	N-9	Washer	2	025050-3-35		
N-6-85	Worm 1/2	1	218884-0-00	N-10	Screw	2	211528-0-01		

# U. Bobbin Winder Mechanism



Ref. No.	Name of Parts	Q'ty	Parts No.	Assembly No.	Ref. No.	Name of Parts	Q'ty	Parts No.	Assembly No.
U-1- 1	Clip Ring	1	048050-3-42	U-1 Bobbin Winder Assembly 147549-0-01	U- 2	Bobbin Winder Supporter	1	148051-0-01	
U-1- 2	Washer	1	025770-2-32		U- 3	Screw	2	009760-8-13	
U-1- 3	Needle Bearing	1	147568-0-01		U- 4	Screw	2	009680-6-12	
U-1- 4	V Belt	1	145684-0-01		U- 5	Belt Cover Assembly	1	145567-0-01	
U-1- 5	Bobbin Winder Driving Pulley	1	148050-0-90		U- 6	Screw	3	009760-8-13	
U-1- 6	Rubber Ring	1	145558-0-01		U- 7	Push Button	1	145682-0-01	
U-1- 7	Bobbin Winder Driving Pulley Stud	1	148049-0-01		U- 8	Cushion	1	151608-0-01	
U-1- 8	Bobbin Winder Driving Pulley Supporter	1	148044-0-01		U- 9	Screw	1	001670-6-12	
U-1- 9	Washer	1	025350-3-32		U-10	Washer	2	025350-3-32	
U-1-10	Screw	1	009670-6-12		U-11	Bobbin Winder Guide Bracket Assembly	1	145571-1-01	
U-1-11	Bobbin Winder Belt Wheel	1	148048-0-01		U-12	Tension Disc	2	145446-0-01	
U-1-12	Screw	2	013670-7-12		U-13	Tension Spring	1	100401-0-01	
U-1-13	Stop Ring	2	048030-3-42		U-14	Nut	1	100136-0-01	
U-1-14	Return Spring	1	148045-0-01		U-15	Belt Cover Lower	1	145570-0-01	
U-1-15	Bobbin Winder Presser Plate	1	147538-0-01		U-16	Screw	2	100666-0-02	
U-1-16	Bobbin Winder Button Stud	1	147540-0-01		U-17	Washer	2	025750-1-32	
U-1-17	Spring	1	147539-0-01		U-18	Belt Cover Lid	1	147548-0-01	
U-1-18	Bobbin Winder Bracket	1	148043-0-01		U-19	Screw	2	009680-5-12	
U-1-19	Bobbin Winder Shaft	1	148047-0-01		U-20	Stop Ring	1	146200-0-01	
U-1-20	Cam Stud Spring	1	148046-0-01		U-21	Spring	1	144505-0-00	
U-1-21	Cam Shaft	1	147542-0-01		U-22	Disc	1	146199-0-01	
U-1-22	Clip Ring	1	048050-3-42		U-23	Screw	1	118764-0-02	
U-1-23	Screw	1	009670-6-12		U-24	Knife	1	146198-0-01	
U-1-24	Bobbin Presser	1	147547-0-01		U-25	Cushion	1	146289-0-01	

\*The details of included accessories are subject to change.

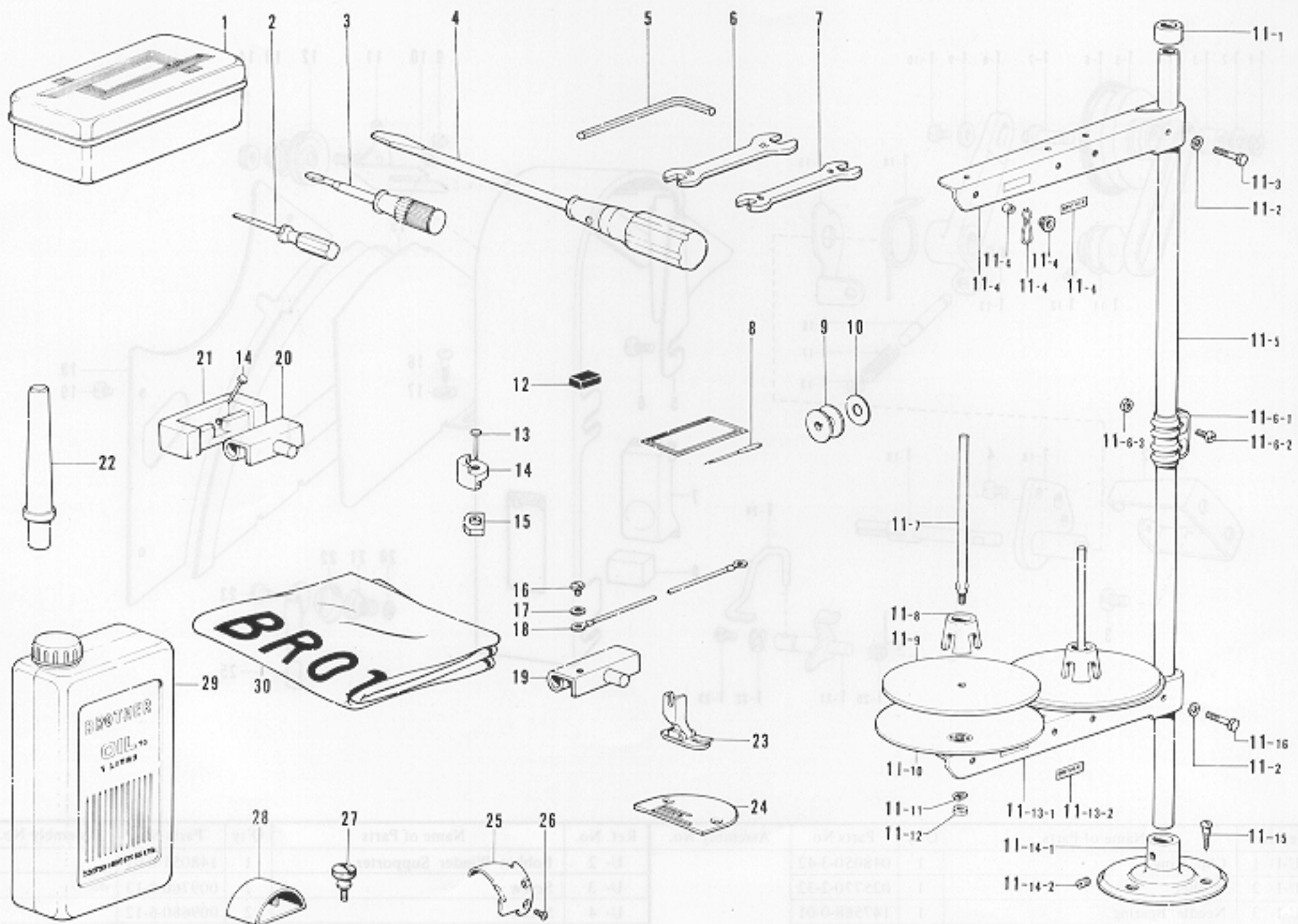
\*Änderungen in der Ausstattung der mitgelieferten Zubehörteile sind vorbehalten.

\*Les détails des accessoires inclus sont sujets à des changements.

\*Los detalles de los accesorios incluidos pueden variar.



## Z. Accessories



Ref. No.	Name of Parts	Q'ty	Parts No.	Assembly No.	Ref. No.	Name of Parts	Q'ty	Parts No.	Assembly No.
Z- 1	Accessory Box		110436-0-01		Z-11-13	Spool Holder Assembly		150177-0-01	
Z- 2	Screw Driver		142443-0-01		Z-11-14-1	Cotton Stand Base		150189-0-01	Z-11-14 Cotton Stand Base Assembly 150139-0-01
Z- 3	Screw Driver		118837-0-01		Z-11-14-2	Screw		150181-0-01	
Z- 4	Screw Driver		101572-1-01		Z-11-15	Screw		031452-2-03	
Z- 5	Spanner		146049-0-01		Z-11-16	Bolt		017502-8-03	
Z- 6	Spanner 10 X 12		107780-0-01		Z-12	Magnet		112525-0-00	
Z- 7	Spanner 8 X 9		100887-0-01		Z-13	Nail		109714-0-00	
Z- 8	Needle				Z-14	Head Cushion		146003-1-01	
Z- 9	Bobbin		100376-0-01		Z-15	Oil Pan Cushion		146004-0-01	
Z-10	Bobbin Case Sheet		140356-0-01		Z-16	Screw		009680-6-13	
Z-11- 1	Cap				Z-17	Washer		025680-2-34	
Z-11- 2	Washer		025050-2-33		Z-18	Earth Wire		145946-0-01	
Z-11- 3	Bolt		017502-8-03		Z-19	Head Hinge		145945-0-01	
Z-11- 4	Thread Hanger Assembly		150192-0-01		Z-20	Hinge		143882-0-01	
Z-11- 5	Pipe		150172-0-01		Z-21	Rubber Hinge		143910-0-01	
Z-11- 6-1	Joint		150173-0-01	Z-11-6 Joint Assembly 150106-0-01	Z-22	Head Rest		100477-0-01	
Z-11- 6-2	Screw		150202-0-01		Z-23	Presser Foot		140957-0-01	
Z-11- 6-3	Nut		021500-1-03		Z-24	Needle Plate		100266-0-01	
Z-11- 7	Spool Shaft		150179-0-01		Z-25	Movable Knife		145608-0-01	
Z-11- 8	Spool Cushion		147060-0-01		Z-26	Screw		141542-0-01	
Z-11- 9	Spool Mat		150182-0-00	Z-11 Cotton Stand Assembly 150150-0-01	Z-27	Thumb Screw		106120-0-01	
Z-11-10	Spool Stand Base		150180-0-00		Z-28	Movable Knife Case		145990-0-01	
Z-11-11	Spring Washer		028050-2-43		Z-29	Oil Tank		145277-1-03	
Z-11-12	Nut		021500-1-03		Z-30	Head Cover		144222-0-01	

\*The details of included accessories are subject to change.

\*Änderungen in der Aufstellung der mitgelieferten Zubehöre sind vorbehalten.

\*Les détails des accessoires inclus sont sujets à des changements.

\*Los detalles de los accesorios incluidos pueden variar.

# DIFFERENT PARTS LIST

Ref. No.	Name of Parts	Sub-Class Motor Spec.	-103		-105		-203		-205	
			Brother	Efka	Brother	Efka	Brother	Efka	Brother	Efka
A-4	Face Plate		145523-0-01				146078-0-01			
A-37	Tension Regulator Assembly		181634-0-01		181635-0-01		181634-0-01		181635-0-01	
A-37-8	Tension Spring		145520-0-01		145153-0-01		145520-0-01		145153-0-01	
B-1	Needle DB x 1		100265-0-34		100265-0-42		100265-0-34		100265-0-42	
B-5	Needle Bar Bushing		145468-0-01		146311-0-01		145468-0-01		146311-0-01	
B-8	Thread Take-up Lever Assembly		147551-0-01		149313-0-01		147551-0-01		149313-0-01	
B-10	Needle Bar		111462-0-01		145986-0-01		111462-0-01		145986-0-01	
B-11	Block for Needle Bar Guide		102630-0-01		146366-0-01		102630-0-01		146366-0-01	
B-52	Rotary Hook Assembly		145585-1-01		148846-0-01		145585-1-01		148846-0-01	
B-54	Bobbin Case Holder Position Bracket		100367-0-01		147337-0-01		100367-0-01		147337-0-01	
B-61	Needle Plate Washer		146188-0-01		146251-0-01		146188-0-01		146251-0-01	
B-62	Needle Plate		145971-0-01		147245-0-01		145971-0-01		147245-0-01	
C-10	Length Control Assembly		181632-1-01		181482-1-01		181632-1-01		181482-1-01	
C-10-4	Length Control Plate		151508-0-01		151507-0-01		151508-0-01		151507-0-01	
C-15	Screw				100511-0-03					
C-16	Reverse Lever				147503-0-01					
C-17	Screw Lever Plate		009711-4-12				009711-4-12			
C-19	Reverse				147504-0-01					
C-23	Reverse Lever Shaft				147505-0-01					
C-25	Spring				150757-0-01					
C-26	Reverse Lever Stopper									
C-27	Reverse Lever Presser Spring									
C-28	Collar									
C-29	Reverse Lever									
C-30	Washer									
C-31	Screw									
C-32	Reverse Lever Shaft									
C-39	Feed Dog		100334-0-01		144500-0-01		100334-0-01		144500-0-01	
D-1	Presser Foot		113280-0-01		145157-0-01		113280-0-01		145157-0-01	
D-17	Tension Releaser				145689-0-01					
D-22	Spring				145475-1-01					
D-30	Knee Lifter Assembly				181427-0-01					
E-30	Oil Pan Assembly				181420-2-01					
E-30-4	Oil Pan				149580-0-01					
E-30-11	Spring				146038-0-01					
E-30-12	Knee Lifter Shaft				146036-1-01					
E-30-14	Spring									
F-17	Solenoid Bracket Assembly		150375-0-01	152187-0-01	150375-0-01	152187-0-01	150375-0-01	152187-0-01	150375-0-01	152187-0-01
F-17-5	Thread Trimming Solenoid Assembly		149108-0-01	152188-0-01	149108-0-01	152188-0-01	149108-0-01	152188-0-01	149108-0-01	152188-0-01
F-17-5-3	Terminal Pin		143549-0-00		143549-0-00		143549-0-00		143549-0-00	
F-22	Connector Cap		145596-0-01		145596-0-01		145596-0-01		145596-0-01	
F-23	Nylon Connector		145681-0-00		145681-0-00		145681-0-00		145681-0-00	
F-33	Spacer		145611-0-00		146187-0-00		145611-0-00		146187-0-00	
G-2	Synchronizer Assembly		218931-0-01		218931-0-01		218931-0-01		218931-0-01	
G-6	Slip Ring Support			148825-0-01		148825-0-01		148825-0-01		148825-0-01
H-5	Cord		146095-0-00	151183-0-01	146095-0-00	151183-0-01	146095-0-01	151183-0-01	146095-0-00	151183-0-01
H-5-4	Terminal Pin		143549-0-00		143549-0-00		143549-0-00		143549-0-00	
H-23	Supporter								140647-0-01	
H-24	Tube Holder									
H-29	Switch									
H-29-2	Terminal Pin									
J-3	Reverse Solenoid									
J-3-5	Terminal Pin									
J-9	Connector Cap									
J-10	6P Connector									
L-1	Air Control Box									
L-2	Presser Foot Lifter Cord Assembly									
L-3	Screw									
L-4	Washer									
L-5	Washer									
L-6	Nut									
L-7	Bead Band									
L-8	Screw									
L-9	Cushion Rubber									
Z-8	Needle DB x 1		100265-0-34		100265-0-42		100265-0-34		100265-0-42	

Ref. No.	Name of Parts	Sub-Class Motor Spec.	-403		-405		-503		-505	
			Brother	Efka	Brother	Efka	Brother	Efka	Brother	Efka
A- 4	Face Plate		146078-0-01							
A-37	Tension Regulator Assembly		181634-0-01		181635-0-01		181634-0-01		181635-0-01	
A-37- 8	Tension Spring		145520-0-01		145153-0-01		145520-0-01		145153-0-01	
B- 1	Needle DB x 1		100265-0-34		100265-0-42		100265-0-34		100265-0-42	
B- 5	Needle Bar Bushing		145468-0-01		146311-0-01		145468-0-01		146311-0-01	
B- 8	Thread Take-up Lever Assembly		147551-0-01		149313-0-01		147551-0-01		149313-0-01	
B-10	Needle Bar		111462-0-01		145986-0-01		111462-0-01		145986-0-01	
B-11	Block for Needle Bar Guide		102630-0-01		146366-0-01		102630-0-01		146366-0-01	
B-52	Rotary Hook Assembly		145585-1-01		148846-0-01		145585-1-01		148846-0-01	
B-54	Bobbin Case Holder Position Bracket		100367-0-01		147337-0-01		100367-0-01		147337-0-01	
B-61	Needle Plate Washer		146188-0-01		146251-0-01		146188-0-01		146251-0-01	
B-62	Needle Plate		145971-0-01		147245-0-01		145971-0-01		147245-0-01	
C-10	Length Control Assembly		181632-1-01		181482-1-01		181632-1-01		181482-1-01	
C-10- 4	Length Control Plate		151508-0-01		151507-0-01		151508-0-01		151507-0-01	
C-15	Screw									
C-16	Reverse Lever									
C-17	Screw Lever Plate									
C-19	Reverse									
C-23	Reverse Lever Shaft									
C-25	Spring			147598-0-01				150757-0-01		
C-26	Reverse Lever Stopper						149083-0-01			
C-27	Reverse Lever Presser Spring						149088-0-01			
C-28	Collar						149087-0-01			
C-29	Reverse Lever						149086-0-01			
C-30	Washer						116662-0-03			
C-31	Screw						009710-8-12			
C-32	Reverse Lever Shaft						149085-0-01			
C-39	Feed Dog		100334-0-01		144500-0-01		100334-0-01		144500-0-01	
D- 1	Presser Foot		113280-0-01		145157-0-01		113280-0-01		145157-0-01	
D-17	Tension Releaser			145689-0-01				147198-0-01		
D-22	Spring			145475-1-01				147197-0-01		
D-30	Knee Lifter Assembly			181427-0-01						
E-30	Oil Pan Assembly			181420-2-01				181430-2-01		
E-30- 4	Oil Pan			149580-0-01				149581-0-01		
E-30-11	Spring			146038-0-01						
E-30-12	Knee Lifter Shaft			146036-1-01				146069-0-01		
E-30-14	Spring							146985-0-01		
F-17	Solenoid Bracket Assembly		150375-0-01	152187-0-01	150375-0-01	152187-0-01	150375-0-01	152187-0-01	150375-0-01	152187-0-01
F-17- 5	Thread Trimming Solenoid Assembly		149108-0-01	152188-0-01	149108-0-01	152188-0-01	149108-0-01	152188-0-01	149108-0-01	152188-0-01
F-17-5-3	Terminal Pin		143549-0-00		143549-0-00		143549-0-00		143549-0-00	
F-22	Connector Cap		145596-0-01		145596-0-01		145596-0-01		145596-0-01	
F-23	Nylon Connector		145681-0-00		145681-0-00		145681-0-00		145681-0-00	
F-33	Spacer		145611-0-00		146187-0-00		145611-0-00		146187-0-00	
G- 2	Synchronizer Assembly		218931-0-01		218931-0-01		218931-0-01		218931-0-01	
G- 6	Slip Ring Support			148825-0-01		148825-0-01		148825-0-01		148825-0-01
H- 5	Cord		146095-0-00	151183-0-01	146095-0-00	151183-0-01	146095-0-00	151183-0-01	146095-0-00	151183-0-01
H- 5- 4	Terminal Pin		143549-0-00		143549-0-00		143549-0-00		143549-0-00	
H-23	Supporter									
H-24	Tube Holder							142268-0-01		
H-29	Switch		146121-0-00	151185-0-01	146121-0-00	151185-0-01	146121-0-00	151185-0-01	146121-0-00	151185-0-01
H-29- 2	Terminal Pin		143549-0-00		143549-0-00		143549-0-00		143549-0-00	
J - 3	Reverse Solenoid		147756-0-01	151181-0-01	147756-0-01	151181-0-01	147756-0-01	151181-0-01	147756-0-01	151181-0-01
J - 3- 5	Terminal Pin		143549-0-00		143549-0-00		143549-0-00		143549-0-00	
J - 9	Connector Cap		145596-0-01		145596-0-01		145596-0-01		145596-0-01	
J -10	6P Connector		146118-0-00		146118-0-00		146118-0-00		146118-0-00	
L- 1	Air Control Box						149539-0-01		149539-0-01	
L- 2	Presser Foot Lifter Cord Assembly						146160-0-01		146160-0-01	
L- 3	Screw						002303-0-06		002303-0-06	
L- 4	Washer						025030-2-33		025030-2-33	
L- 5	Washer						028030-2-43		028030-2-43	
L- 6	Nut						021300-1-03		021300-1-03	
L- 7	Bead Band						144189-0-01		144189-0-01	
L- 8	Screw						031483-2-03		031483-2-03	
L- 9	Cushion Rubber						115018-0-01		115018-0-01	
Z- 8	Needle DB x 1		100265-0-34		100265-0-42		100265-0-34		100265-0-42	

Ref.No.	Name of Parts	Phase Volt	3 Phase				1 Phase				
			220V	380V	400V	400V (Lamp tap 12V)	110V	220V	240V	240V (Lamp tap 12V)	240V (W/O lamp tap)
M-1	Control Box Assembly	200	220970-0-01	220966-0-01	220965-0-01		220971-0-01	220972-0-01			
		400					220974-0-01	221051-0-01			
		500	220967-0-01	220968-0-01	220969-0-01		220975-0-01	220976-0-01	220977-0-01		
M-1- 4	Tranformer	219749-0-00	219501-0-00	219505-0-00		220001-0-00	219749-0-00	219744-0-00			
M-1- 9	Condenser Set Plate						219746-0-01				
M-1-10	Screw						215080-0-01				
M-1-11	Condenser						220010-0-01	219745-0-01			
M-1-19	Printed Circuit Board	200/400						219698-0-01			
		500						220070-0-01			
M-1-20	Printed Circuit Board	200/500						219752-0-01			
		400						219699-0-01			
M-1-22	Pilot Lamp	216364-0-00					217249-0-00	216364-0-00			
N-6	Motor Assembly	219972-0-01	219497-0-01	219934-0-01	219507-0-01	219984-0-01	219733-0-01	219967-0-01	219726-0-01	219791-0-01	
N-6-34	Stator	219485-0-01	219483-0-00	219933-0-00	219484-0-00	219985-0-00	219734-0-00	219968-0-00	219728-0-00	219792-0-00	
N-6-35	Roter	213802-0-01					217805-0-01				
N-6-39	Fly Wheel	218872-0-01					219729-0-01				
N-6-44	Sub Motor Assembly	219973-0-01	219499-0-01	219509-0-01		219986-0-01	219735-0-01	219730-0-01			
N-6-44- 4	Roter	218907-0-01					219235-0-01				
N-6-44-13	Stator	219488-0-00	219486-0-00	219487-0-00		219987-0-00	219736-0-00	219731-0-00			
N-6-16	Lead Wire for Earth	213792-0-01					213792-0-01				
N-6-15Q'ty	Lead Wire (White)	2					1				

Ref. No.	Name of Parts	Parts No.	Sewing Speed			
			50Hz		60Hz	
			High Speed	Slow Speed	High Speed	Slow Speed
N-7	Pulley K- 75	216921-0-01			3550	165
	Pulley K- 80	217135-0-01			3850	180
	Pulley K- 85	216922-0-01	3400	160	4050	190
	Pulley K- 90	216923-0-01	3650	170	4300	205
	Pulley K- 95	217136-0-01	3850	180		
	Pulley K-100	216924-0-01	4050	190		
	Pulley K-105	216925-0-01	4250	200		